

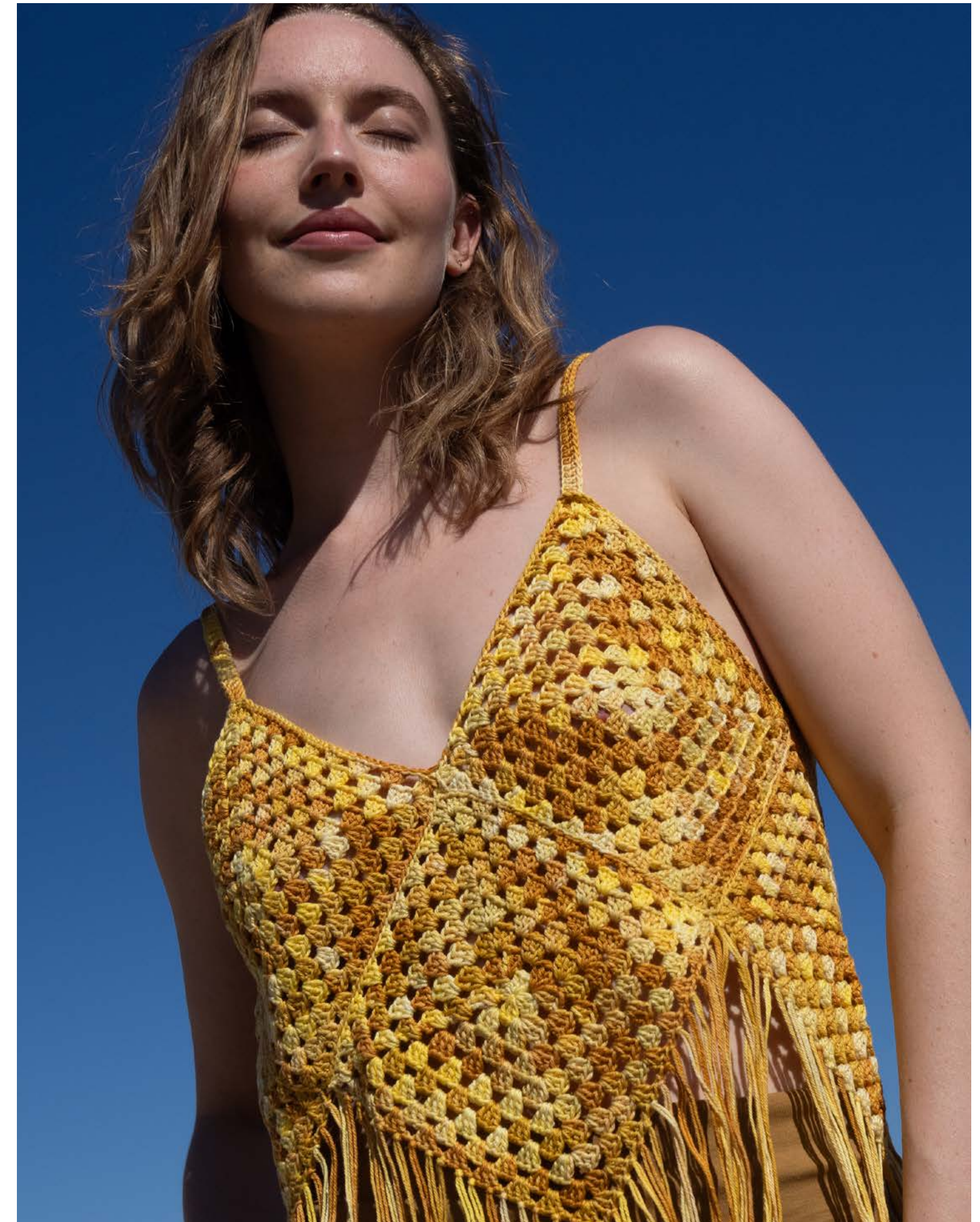
2025

PRIMAVERA VERANO
PRINTEMPS ÉTÉ
SPRING SUMMER
FRÜHJAHR SOMMER
LENTE ZOMER
PRIMAVERA ESTATE



Katija®

N.121
CROCHET



CR-409 CAPRI TONES 300

200 gr. 4 





CR-801+802 PANAMA 16

350 g. 7 



CR-20 RAFFIA X-TREME 101-108

385 g. 4 

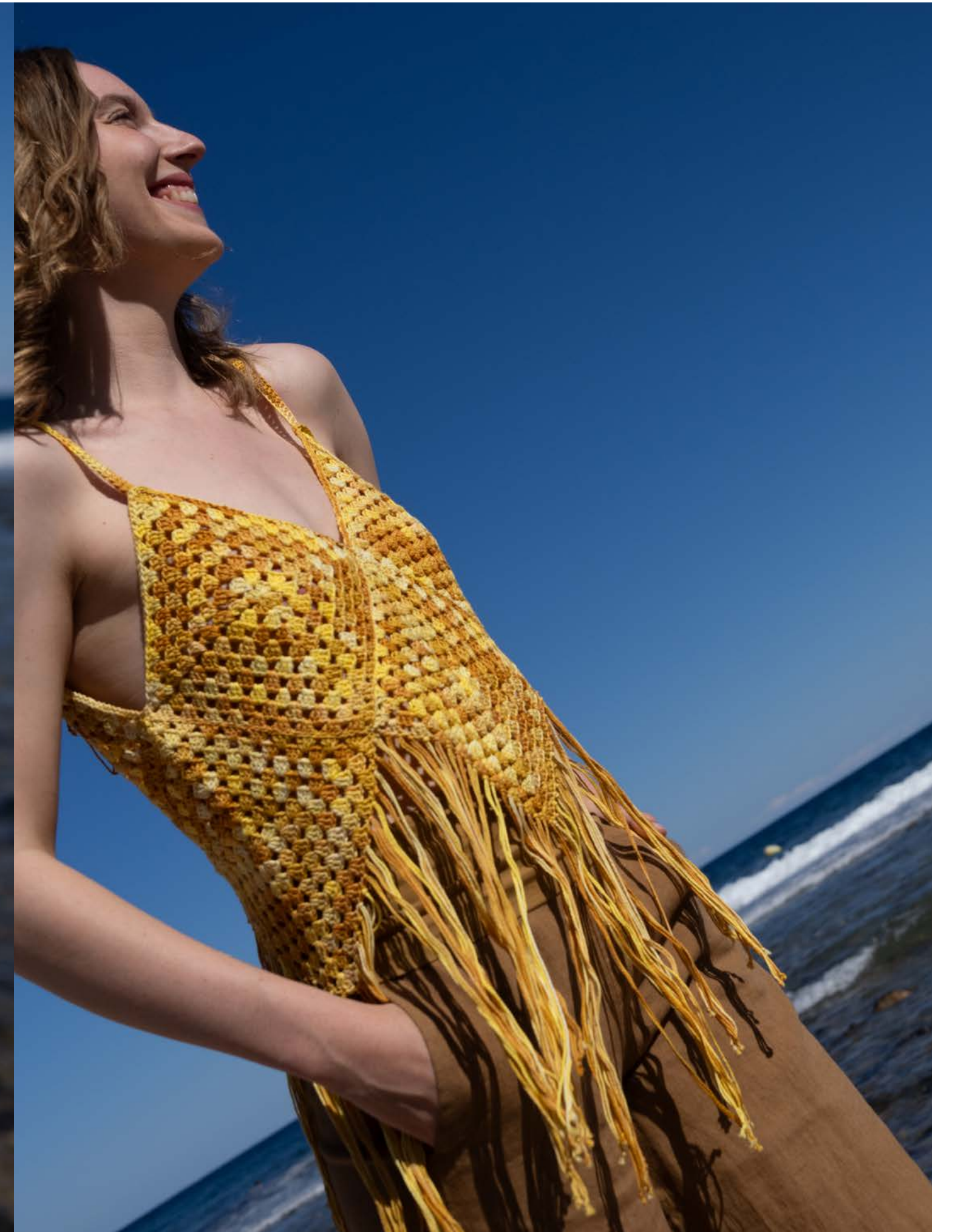


CR-410 ECOLIFE RIBBON 117-118

110 g. 2 



CR-409 CAPRI TONES 300



200 g. 4 



CR-400 SUMMER COMFORT 74-70

300 g. 6 



CR-408 FAIR COTTON DIVERSO 64

415 g. 3 



CR-404 GATSBY 88500

750 g. 15 



CR-403 LINEN 36

230 g. 5 



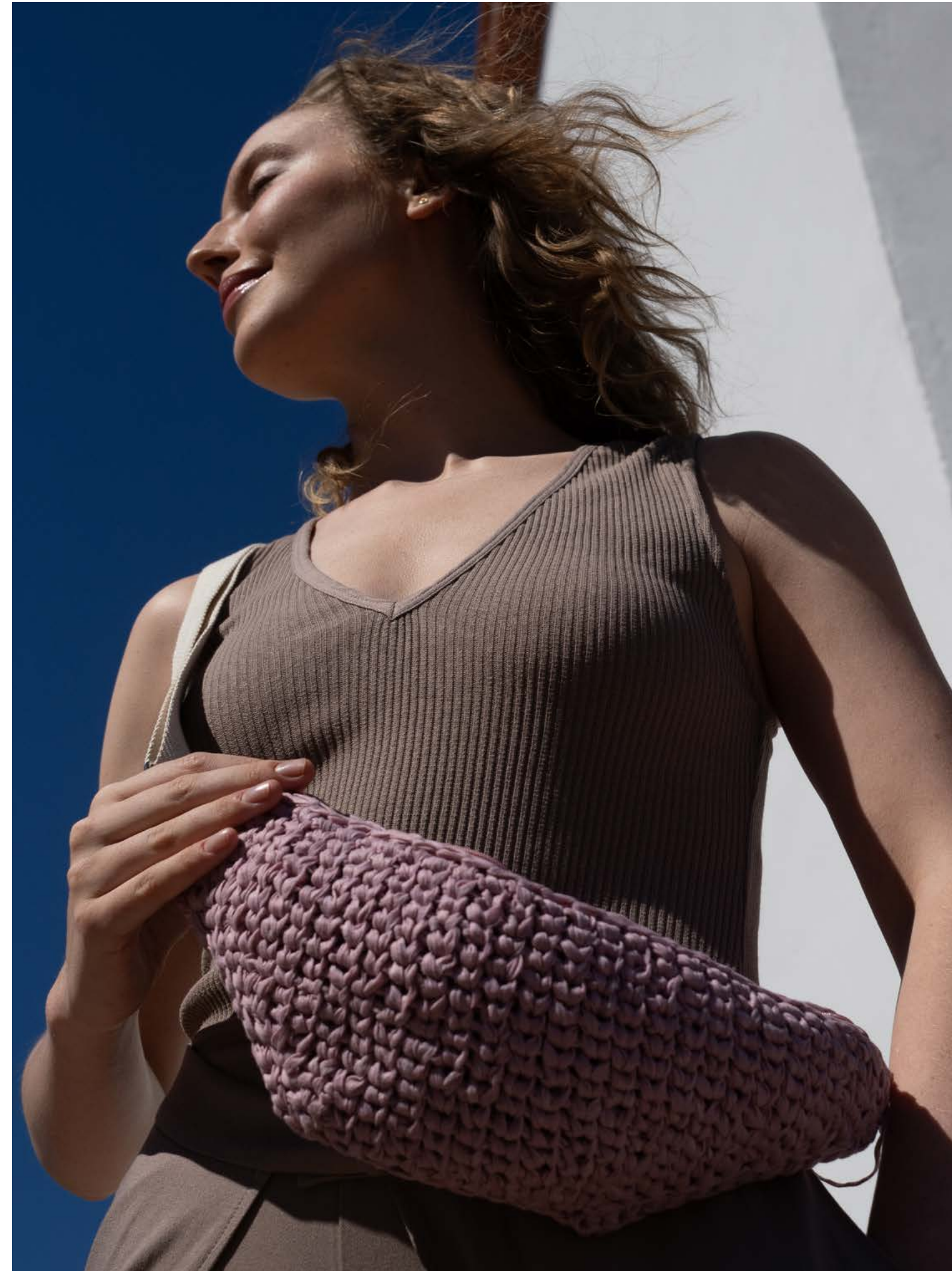
CR-401 BEL-AIR 61-50-56-64

200 g. 4 



CR-803 RAFFIA X-TREME 106

80 g. 1 



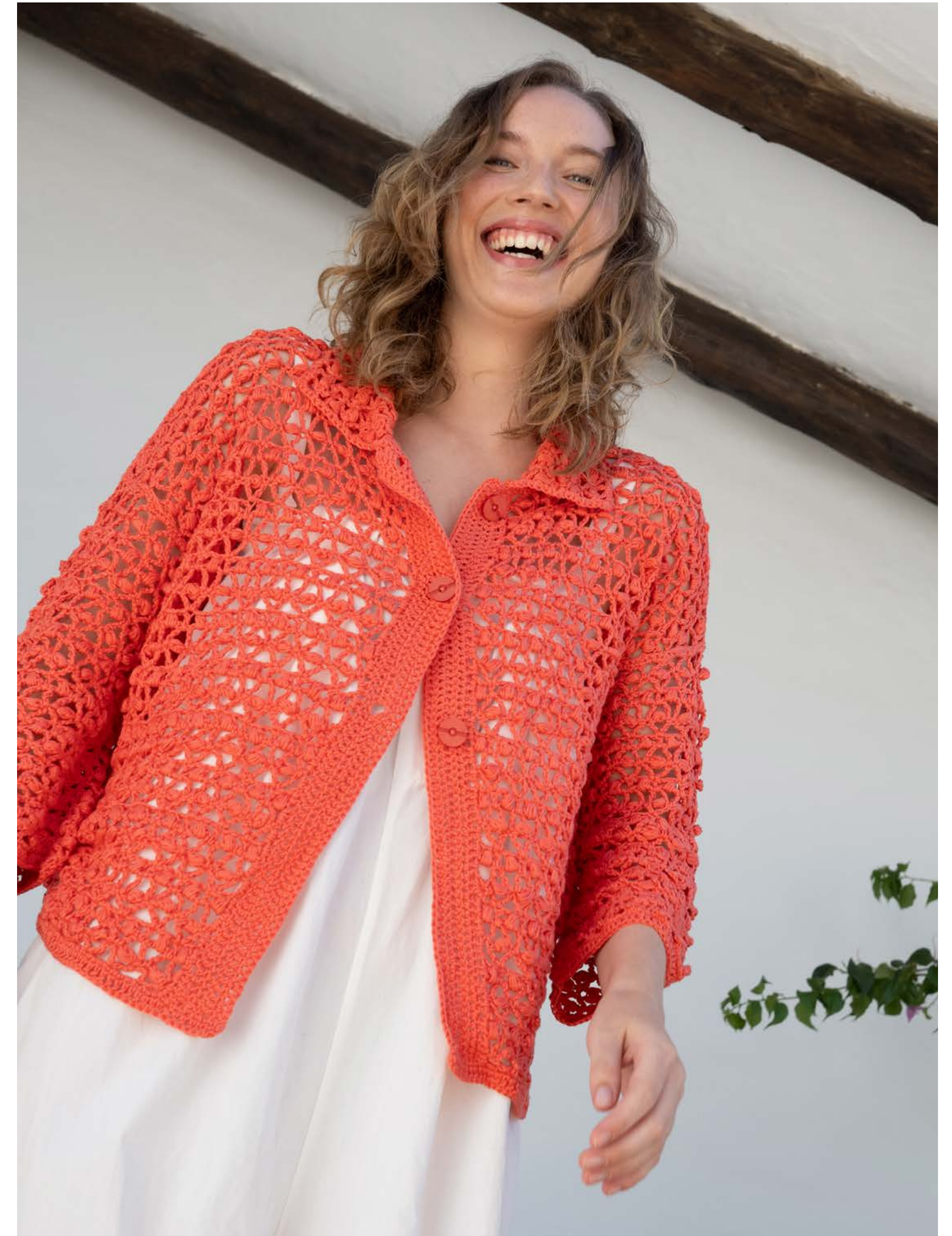
CR-406 WASHI 139

95 g. 1 



CR-407 JARAPA 505

540 g. 6 



KPCR-402 PANAMA 91-51-47

450 g. 9 

CR-03 FAIR COTTON 44

380 g. 8 



CR-411 EASY CROCHET CAPRI 112-100-110-104

210 g. 5 

CR-405 BIG RIBBON 14

295 g. 2 

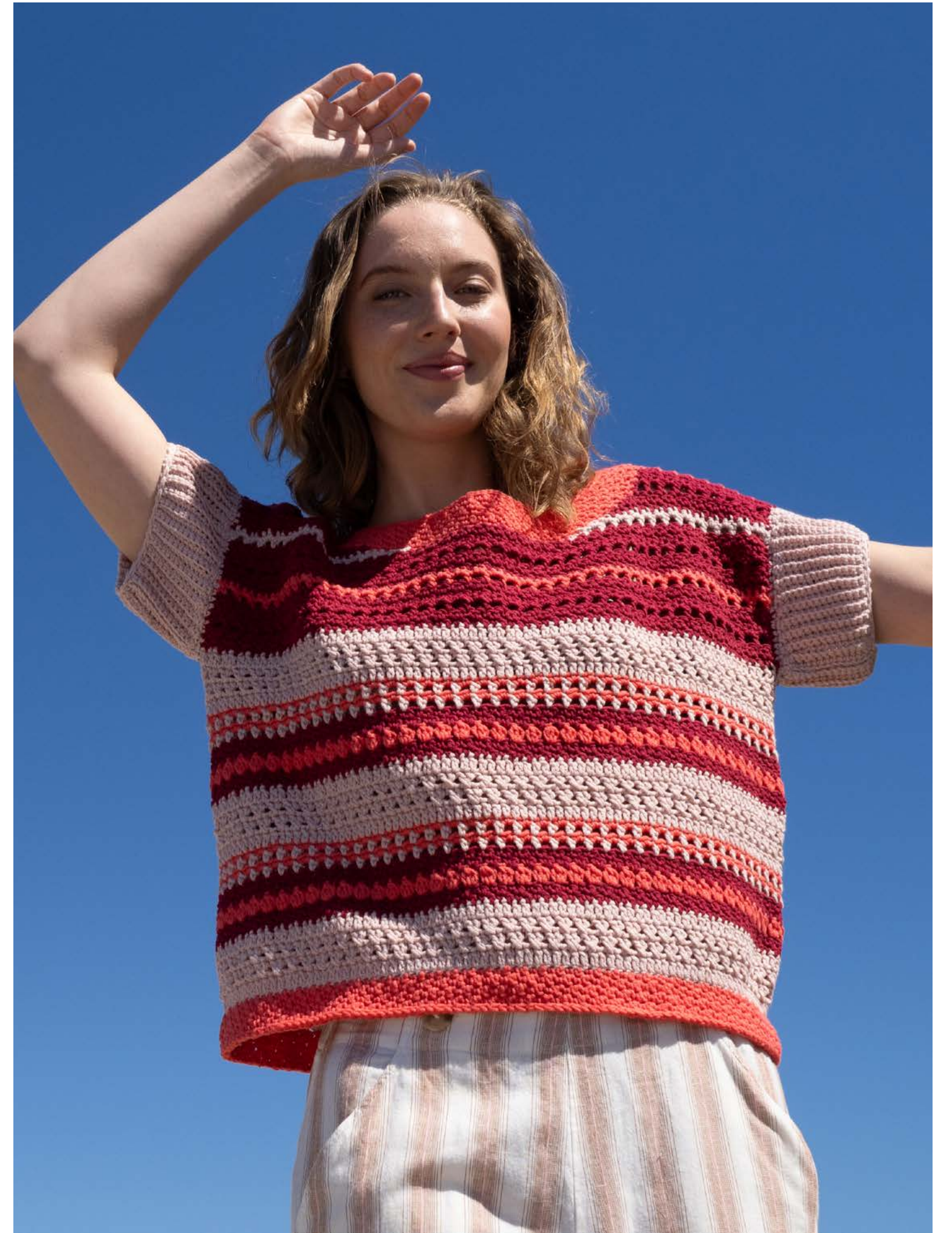


KPCR-01 LINO 100% 38

480 g. 10 

CR-19 COTTON 100% 72-54-41

280 g. 6 



KPCR-800 COTTON 100% 31

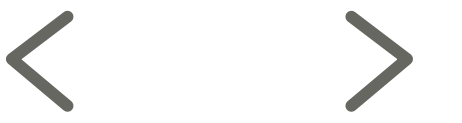
720 g. 15 

CR-500 ALABAMA 48-34-61

395 g. 8 

Katia

N.121 CROCHET



KPCR-200 FAIR COTTON 44-32-50

440 g. 9 





CR-804 BLUE JEANS 201-105-204

250 g. 3 



CR-501 TENCEL-COTTON 43-5

300 g. 6 