



# WOOLADDICTS

#14

2088.0001 D / F / NL

BY LANGYARNS

CHF 9.90 € 9.95

## KNITTING ESCAPES

Inspiration can come from many places. For this pattern collection, we journeyed to the Burgundy region of France to explore various settings that make for a perfect knitting holiday. From a summer garden party to a serene country escape, each location provided an unique backdrop for creativity and relaxation.

Imagine knitting amidst the enchanting ambiance of a fairytale castle or beside ancient ruins that whisper stories of the past. Let us take you and your knitting on a journey through different yarns, textures, and colors, each inspired by the rich history and natural beauty of Burgundy.

# WOOLADDICTS





**NEW!**

## **GLOW**

Get your needles and your wardrobe **GLOWing** with this voluminous summer yarn. This glistening yarn allows you to create flowing pieces with a subtle interplay of matte and shiny stitches, depending on whether the cotton or the viscose is more prominent in a given section. Perfect for summer-ready garments that capture the glowing sunshine with each stitch, **GLOW** is available in both semi-solid and variegated colors.

ITEM# 1158

# WOOLLADDICTS



**GARDEN PARTY**



**CASTLE GETAWAY**



**COUNTRYSIDE RETREAT**



**FIELD TRIP**



## GARDEN PARTY

YOU ARE CORDIALLY INVITED TO OUR SUMMER GARDEN PARTY, AND YES, YOU'RE MORE THAN WELCOME TO BRING YOUR KNITTING.

CAPTURED IN THE LUSH GARDEN OF "MAISON HORS DU TEMPS" IN FRANCE, THIS VIGNETTE OFFERS YOU AN ABUNDANCE OF SUNSHINE, BLOOMING FLOWERS, REFRESHING DRINKS, AND LIVELY MUSIC. IT'S THE PERFECT BACKDROP TO INSPIRE SUMMERY VIBES IN YOUR KNITTING PROJECTS AND WARDROBE.





**GLOW.** WITH THIS DUO OF HAT AND SCARF, YOU'LL BE THE GLOWING CENTER OF ATTENTION AT ANY PARTY. PAIR THE RIBBED SUMMER GLOW HAT WITH THE TEXTURED SUNNY DAY SCARF ON THE NEXT CHILLY BUT BRIGHT DAY TO RADIATE WARMTH AND STYLE.

**SUMMER GLOW** HAT PATTERN# 285-001-001

**SUNNY DAY** SCARF PATTERN# 285-002-001



WOOLLADDICTS

# WOOLADDICTS



In the **GARDEN** of **LIFE** – **LOVE** is always **BLOSSOMING**.



**BLISS.** LIKE THE PETALS OF A DELICATE FLOWER, THE RUFFLE SLEEVES ON THIS T-SHIRT ADD BEAUTY AND ELEGANCE. COMBINED WITH THE INTRICATE TEXTURE ON THE BODY, THIS DESIGN OFFERS A QUICK AND SATISFYING KNITTING EXPERIENCE, PERFECT FOR THOSE WHO LOVE TO ROMANTICIZE THEIR KNITTING LIFE.

**BLOSSOMING** SWEATER PATTERN# 285-003-001



**BLISS.** CRAFTED WITH A COMBINATION OF KNIT AND PURL STITCHES, THIS SWEATER FEATURES A SUBTLE GEOMETRIC TEXTURE INSPIRED BY THE GRADUAL GROWTH OF A FLOWER, FROM BUD TO ITS MOMENT OF PERFECT BLOOM. LET THIS DESIGN INSPIRE YOU IN TURN TO TAKE YOUR TIME AND CREATE THE PERFECT SWEATER.

**PERFECT BLOOM** SWEATER PATTERN# 285-004-001





Turn everyday into a **CELEBRATION**,  
by embracing the **ZEST** of **LIFE**.

**GLOW.** THIS CLASSIC SLIPOVER WITH A REFRESHING TWIST IS SURE TO BECOME A STAPLE IN YOUR SUMMER WARDROBE.  
THE VARIEGATED YARN AND THOUGHTFUL FINISHING DETAILS ADD JUST THE RIGHT AMOUNT OF ZING TO THE GRAPEFRUIT SPRITZ.  
**GRAPEFRUIT SPRITZ** SLIPOVER PATTERN# 285-005-001



**GLOW.** IF LIFE GIVES YOU LEMONS, MAKE LEMONADE. IF LIFE GIVES YOU COLORFUL YARN, TURN IT INTO A PINK LEMONADE SLIPOVER. THIS DELIGHTFUL SUMMER STAPLE ADDS A BURST OF FRESHNESS TO ANY OUTFIT.

**PINK LEMONADE** SLIPOVER PATTERN# 285-006-001





# WOOLLADDICTS

**GLOW.** LIKE THE BUBBLES IN A SPARKLING SUMMER COCKTAIL, THE DROP STITCH PATTERN ON THIS LONG VEST UNDULATES PLAYFULLY AS IT PROGRESSES. COMBINED WITH THE COLOR-CHANGING YARN, THIS DESIGN MAKES FOR A QUICK AND ENTERTAINING KNITTING PROJECT AND A PERFECT LAYERING PIECE TO ADD ZEST TO ANY OUTFIT.

**STRAWBERRY FIZZ** GILET PATTERN# 285-007-001





# WOOLADDICTS



**PRIDE.** A DRAWSTRING SHORT WITH WIDE LEGS PAIRED WITH A MATCHING TANK—DOESN'T IT JUST SCREAM PEAK SUMMER VIBES? THIS OUTFIT IS PERFECT FOR ENJOYING A LAID-BACK DAY, LETTING YOURSELF KNIT, RELAX, AND LISTEN TO A CUSTOM PLAYLIST.

**SUMMER PLAYLIST** TOP PATTERN# 285-008-001

**DAYLIGHT JAM** PANTS PATTERN# 285-009-001

Get your **KNITTING MOVES** on.



In the **GARDEN** of **CREATIVITY**...



# WOOLADDICTS

**FOOTPRINTS.** THE FLORAL CENTERPIECE CARDIGAN, WITH ITS FINELY STRIPED PATTERN AND DISTINCTIVE TIE CLOSURE, MIRRORS THE ELEGANCE OF A FLORAL CENTERPIECE ON A DINNER TABLE. JUST AS A CENTERPIECE ADDS GRACE TO A GATHERING, THIS CARDIGAN BECOMES THE CENTRAL PIECE OF YOUR SUMMER WARDROBE, EFFORTLESSLY ENHANCING EVERY OUTFIT.

**FLORAL CENTERPIECE** CARDIGAN PATTERN# 285-010-001



... **YARN** is the thread,  
ribbons are the adornments,  
and flowers are the **INSPIRATION...**

**ARTSY.** THE FLOWING RIBBONS SWEATER FEATURES A DELICATE DROP STITCH PATTERN THAT RESEMBLES RIBBONS CASCADING ACROSS THE FABRIC. THIS INTRICATE DESIGN FEATURE ADDS A TOUCH OF ROMANCE, WITH EACH STITCH CREATING A FLOWING EFFECT THAT ADORN THE SWEATER..

**FLOWING RIBBONS** SWEATER PATTERN# 285-011-001





## **CASTLE GETAWAY**

FOR THE FOLLOWING PAGES, LET US TAKE YOU ON A FIBER-FILLED CASTLE GETAWAY TO THE MAJESTIC CHÂTEAU DE COUCHES, A MAGNIFICENT MEDIEVAL FORTRESS NESTLED IN THE HEART OF BURGUNDY.

SURROUNDED BY PICTURESQUE GARDENS AND HISTORIC TOWERS, THIS ENCHANTING SETTING INVITES YOU TO IMMERSE YOURSELF IN ITS RICH TAPESTRY OF HISTORY. EXPERIENCE THE GRANDEUR OF THE PAST IN THIS FRENCH GEM, WHERE EVERY STONE AND CORNER TELLS A STORY OF BYGONE ERAS, AND LET THE HISTORY AND ROMANCE INSPIRE YOUR CRAFTING.

**PRIDE.** WITH EXQUISITE LACE DETAILING AT THE CUFFS THAT ADD A ROMANTIC TOUCH TO THE DESIGN, THE ENCHANTING SWEATER TRULY LIVES UP TO ITS NAME. THE LACE PATTERN IS EASY TO MEMORIZE BUT TRANSFORMS THIS BASIC SWEATER INTO A STATEMENT PIECE FOR YOUR PERFECT SUMMER ROMANCE.

**ENCHANTING** SWEATER PATTERN# 285-012-001







Your **CROCHET** hook is the wand –  
and your **IMAGINATION** is the spell!

**ARTSY.** SPACIOUS ENOUGH TO HOLD EVERYTHING YOU NEED FOR A MAGICAL DAY TRIP, THE SCAVENGER HUNT CROCHET BAG ENSURES YOUR ESSENTIALS ARE ALWAYS WITHIN REACH. PERFECTLY SIZED, IT PREVENTS THE SEARCH FOR YOUR SUNGLASSES FROM TURNING INTO A SCAVENGER HUNT. THIS BAG KEEPS YOUR BELONGINGS ORGANIZED AND ACCESSIBLE..

**SCAVENGER HUNT** BAG PATTERN# 285-013-001



# WOOLADDICTS



**GLOW.** THE PRINCESS CHARMING SWEATER EMBODIES THE ELEGANCE AND CHARM OF A FAIRY-TALE PRINCESS. EACH STITCH REFLECTS THE TIMELESS ALLURE AND WARMTH OF CLASSIC ROMANCE. JUST AS A PRINCESS CAPTIVATES WITH GRACE AND POISE, THIS SWEATER ENCHANTS WITH ITS FLAWLESS KNITTING AND SOPHISTICATED DETAILS.

**PRINCESS CHARMING** SWEATER PATTERN# 285-014-001



**BLISS.** THE SPELLBOUND SWEATER ENCHANTS YOU WITH ITS SIMPLE TEXTURED PATTERN, KEEPING YOU MESMERIZED FOR HOURS. THE CAPTIVATING DESIGN ENSURES THAT YOUR KNITTING SESSIONS FLY BY, AND BEFORE YOU KNOW IT, YOUR SWEATER WILL BE COMPLETE.

**SPELLBOUND SWEATER**  
PATTERN# 285-015-001

Every adventure **STARTS** with a single **STEP**...



**GLOW.** THE GRAND ENTRANCE CARDIGAN ENSURES THAT YOUR ARRIVAL WILL NEVER GO UNNOTICED, MAKING IT A STANDOUT STATEMENT PIECE. DESPITE ITS BOLD, COLORFUL DESIGN, IT REMAINS EFFORTLESSLY CASUAL AND COMFORTABLE TO WEAR, MAKING IT AN IDEAL LAYERING PIECE FOR KEEPING WARM IN THE SHADOW OF THOSE COOL CASTLE WALLS.

**GRAND ENTRANCE** CARDIGAN PATTERN # 285-016-001





Every project **STARTS** with a single **STITCH**...



# WOOLADDICTS

**BLISS.** THE ALL-OVER MOCK-CABLES ON THIS V-NECK RESEMBLE IVY MEANDERING UP THE WALLS OF A CASTLE TOWER. WITH ITS NATURE-INSPIRED PATTERN AND FINE YARN, THE CLIMBING IVY TOP IS A LABOR OF LOVE—BUT AFTER ALL, A CASTLE ISN'T BUILT IN A DAY EITHER.

**CLIMBING IVY** SWEATER PATTERN# 285-017-001



... so **START!**



**GLOW.** WITH ITS LONG SILHOUETTE AND HOOD, THE CASTLE KEEP SWEATER OFFERS A SENSE OF PROTECTIVE WARMTH AND COMFORT. THE GARTER STITCH TEXTURE EVOKES A FEELING OF BEING SECURELY WRAPPED IN A FORTRESS OF SOFTNESS. WHETHER YOU CHOOSE TO EMBRACE THE WORLD OR SHIELD YOURSELF FROM IT, THIS SWEATER HAS YOU COVERED.

**CASTLE KEEP**

**SWEATER** PATTERN# 285-018-001

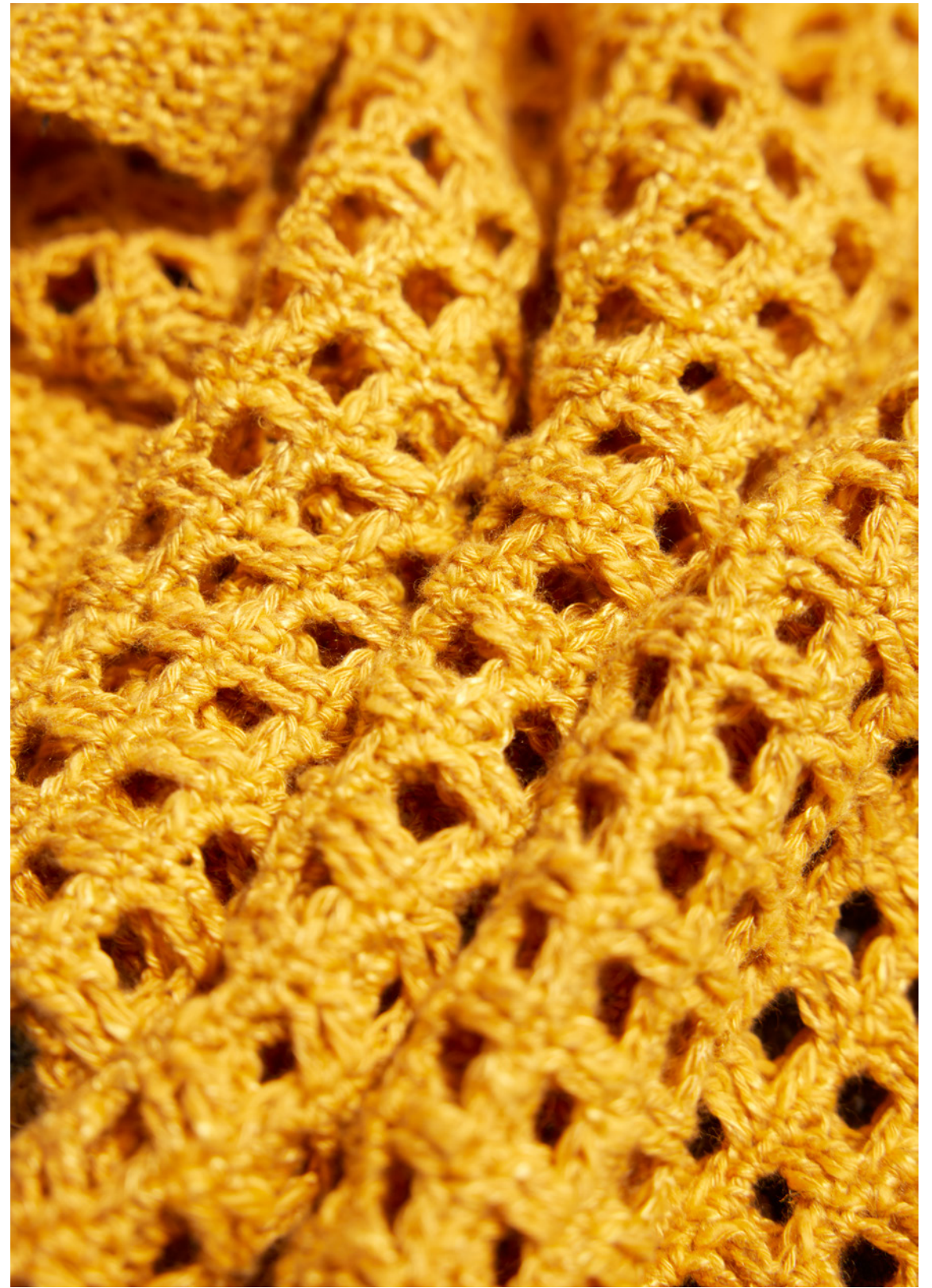


**PRIDE.** THIS KNITTED BAG IS LIKE A TREASURE TROVE OF STITCHES, EACH ONE CRAFTED BY YOUR OWN HANDS. WHETHER YOU'RE GATHERING EVERYDAY ESSENTIALS OR DISCOVERING HIDDEN GEMS, THIS BAG IS THE PERFECT COMPANION FOR ALL YOUR ADVENTURES.  
**TREASURE TROVE** BAG PATTERN# 285-019-001





# WOOLLADDICTS



**PROUD** to be a **KNITTER!**

**PRIDE.** NOT EVERYTHING THAT GLITTERS IS GOLD—SOMETIMES ITS YARN CATCHING THE LIGHT AT JUST THE RIGHT ANGLE. THE OPEN, LUSTROUS FABRIC OF THE HOARD OF GOLD BAG PROVIDES A TANTALIZING GLIMPSE OF WHAT'S INSIDE WHILE KEEPING THE CONTENTS PARTIALLY CONCEALED, ADDING AN AIR OF MYSTERY TO THE WEARER.  
**HOARD OF GOLD BAG** PATTERN # 285-020-001



## **COUNTRYSIDE RETREAT**

FOR THE FOLLOWING PAGES, LET US TAKE YOU ON A SERENE ESCAPE TO LE DOMAINE DE RYMSKA IN THE HEART OF THE ROLLING FRENCH COUNTRYSIDE.

SURROUNDED BY PONDS, MEADOWS, AND WOODS, THIS TRANQUIL PARADISE BLENDS THE CHARM OF THE OLD WITH MODERN COMFORTS. IMMERSE YOURSELF IN THE PEACEFUL AMBIANCE OF THIS 80-HECTARE RETREAT, WHERE TIME STANDS STILL, OFFERING ABSOLUTE TRANQUILITY AND STARRY NIGHTS OF PURE SILENCE.





# WOOLADDICTS

**GLOW.** KNIT FROM SIDE TO SIDE, THE NATURE WALK SWEATER EVOKES THE SERENE BEAUTY OF WALKING ALONG A TREE-LINED PATH. THE MULTICOLORED YARN ENHANCES THIS EFFECT, MIMICKING THE VIBRANT PLAY OF LIGHT AND SHADOW THROUGH THE FOLIAGE.

**NATURE WALK** SWEATER PATTERN# 285-021-001



**GLOW.** THE FRESH-AIR CROCHET DRESS IS THE EPITOME OF SUMMER EASE, ALLOWING YOU TO SIMPLY THROW IT ON AND GO. THE OPENNESS OF THE CROCHET STITCHES LETS AIR FLOW AROUND YOU, KEEPING YOU COOL EVEN ON THE HOTTEST DAYS. THIS EFFORTLESS PIECE IS PERFECT FOR STAYING COMFORTABLE AND CHIC ALL SEASON LONG.

**FRESH-AIR** DRESS PATTERN# 285-022-001





**FOOTPRINTS.** OPEN CROCHET STITCHES AND FINE YARN MAKE THE WIND-KISSED PONCHO THE PERFECT LAYERING PIECE FOR BREEZY DAYS. WITH ITS LIGHTWEIGHT DESIGN AND BEAUTIFUL DRAPE, A LITTLE TWIRL NOW AND THEN IS AN ABSOLUTE MUST.

**WIND-KISSED PONCHO**  
PATTERN# 285-023-001



# WOOLLADDICTS



© STITCH © DAY

**FOOTPRINTS.** JUST A FEW STITCHES EACH MORNING CAN TURN INTO A BEAUTIFUL FINISHED PIECE BEFORE YOU KNOW IT. THE MORNING MEDITATION GRANNY SQUARE BANDANA EMBODIES THE SOOTHING, MEDITATIVE NATURE OF CROCHETING. THIS MINDFUL PRACTICE NOT ONLY CREATES A CHARMING ACCESSORY BUT ALSO BRINGS A SENSE OF CALM AND ACCOMPLISHMENT TO THE START OF YOUR DAY.  
**MORNING MEDITATION | BANDANA** PATTERN # 285-024-001



**CREATIVITY** spreads like ripples on still water.

**PRIDE.** THE RIPPLE EFFECT CARDIGAN FEATURES A COMBINATION OF CABLE AND LACE PATTERNS THAT RIPPLE GRACEFULLY ALONG ITS LENGTH. THIS DYNAMIC DESIGN CREATES A VISUALLY STUNNING EFFECT, AS IF WAVES OF TEXTURE FLOW SEAMLESSLY ACROSS THE GARMENT. THE INTERPLAY OF CABLES AND LACE ADDS BOTH DEPTH AND ELEGANCE, MAKING THIS CARDIGAN A STANDOUT PIECE.

**RIPPLE EFFECT** CARDIGAN PATTERN# 285-025-001



In **KNITTING**, we find life's **RHYTHM**.



**GLOW.** THE YARN'S EVER-CHANGING OPTIC—FROM MATTE TO SHINY AND SHIFTING SHADES OF BLUE—MIRRORS THE DYNAMIC NATURE OF LIFE ITSELF. THE FLOW OF LIFE TOP BEAUTIFULLY EMBODIES THE RHYTHM OF YARN FLOWING THROUGH YOUR FINGERS AS YOU KNIT, CREATING A SOOTHING, MEDITATIVE EXPERIENCE.

**FLOW OF LIFE** SWEATER PATTERN# 285-026-001



**BLISS.** AS YOU KNIT, THE PROCESS GROUNDS YOU IN THE PRESENT MOMENT, MUCH LIKE ROOTS ANCHORING A TREE. THE DEEP ROOTS TOP FEATURES CABLE PANELS THAT RESEMBLE INTERTWINING ROOTS, SYMBOLIZING A DEEP CONNECTION TO ONE'S FOUNDATION. THIS TOP NOT ONLY REFLECTS STRENGTH AND STABILITY BUT ALSO BRINGS A MINDFUL FOCUS TO YOUR CRAFTING EXPERIENCE.

**DEEP ROOTS** TOP PATTERN# 285-027-001

**CREATING** with **INTENTION**  
anchors us in the present **MOMENT.**







**BLISS.** EMBRACING A SLOWER PACE ALLOWS FOR ESSENTIAL RECHARGING OF BOTH ENERGY AND CREATIVITY. THE LAZY DAY JACKET EMBODIES THIS ART OF FINDING RESTFUL PAUSES IN LIFE, ENCOURAGING RELAXATION AND REFLECTION. IN MOMENTS OF IDLENESS, WE DISCOVER OUR MOST PROFOUND INSPIRATION!.

**LAZY DAY** **CARDIGAN** PATTERN# 285-028-001





**BREATHE in – BREATHE out.**



# WOOLADDICTS

**BLISS.** THE DEEP BREATH SWEATER CAPTURES THE SOOTHING RHYTHM OF KNITTING, MIRRORING THE CALMING PATTERN OF DEEP, STEADY BREATHS. ITS DESIGN REFLECTING THE VISUAL RHYTHMS FOUND IN NATURE, WITH EACH STITCH FLOWING IN HARMONIOUS CADENCE.

**DEEP BREATH** SWEATER PATTERN# 285-029-001



**GLow.** THIS GARMENT SERVES AS A REMINDER THAT ACHIEVING INNER BALANCE FOSTERS A SENSE OF OUTER CALM AND POISE. THE INNER BALANCE SLIPOVER SHOWCASES THE PERFECT HARMONY OF YARN AND PATTERNS, REFLECTING A SERENE EQUILIBRIUM IN ITS DESIGN. WEARING IT, YOU EMBRACE BOTH AESTHETIC AND EMOTIONAL EQUILIBRIUM, FINDING PEACE IN EVERY STITCH.

**INNER BALANCE** SLIPOVER PATTERN# 285-030-001



Let **KNITTING** transform  
your stress into **SERENITY**

**PRIDE.** JUST AS IMMERSING OURSELVES IN NATURAL SETTINGS CALMS THE NERVOUS SYSTEM, CRAFTING WITH OUR HANDS AND TOUCHING NATURAL MATERIALS IN KNITTING OFFERS A SIMILAR SENSE OF PEACE. THE WAVE OF CALM TOP IS A WEARABLE REMINDER OF THE CALMING RHYTHMS OF BOTH NATURE AND MINDFUL CREATION.

**WAVE OF CALM** TOP PATTERN# 285-031-001



# WOOLLADDICTS



**FLOW** with the tides.

**ARTSY.** THE WAVELETS TOP SHOWCASES THE MESMERIZING RIPPLE EFFECT CREATED BY THE INTERPLAY OF KNIT AND PURL STITCHES. COMBINED WITH A MULTICOLORED YARN, THIS DESIGN GENERATES A DYNAMIC VISUAL FLOW, AS IF EACH WAVE IS CAPTURED IN A SPECTRUM OF HUES. THE RESULT IS A GARMENT THAT RADIATES MOVEMENT AND DEPTH, BRINGING A VIBRANT ENERGY TO EVERY WEAR.

**WAVELETS TOP** PATTERN# 285-032-001



## FIELD TRIP

WE INVITE YOU TO EXPLORE THE MAJESTIC TEMPLE OF JANUS, A HISTORICAL MARVEL SET AMIDST THE ANCIENT RUINS OF AUTUN, FRANCE.

SURROUNDED BY THE REMNANTS OF A ONCE-GRAND SANCTUARY, THIS SITE OFFERS A GLIMPSE INTO THE PAST WITH ITS TOWERING WALLS, INTRICATE STONEMWORK, AND CAPTIVATING HISTORY. AS YOU WANDER THROUGH THIS ANCIENT MONUMENT, LET ITS TIMELESS BEAUTY INSPIRE YOUR OWN CREATIVE JOURNEY. WITH A YARN LIKE ARTSY, KNOWN FOR ITS PRINTS AND VIBRANT COLORS, YOU CAN CHANNEL THE SPIRIT OF THE PAST INTO YOUR PROJECTS, REFLECTING ON THE RICH HISTORY OF CRAFTSMANSHIP WHILE CREATING SOMETHING UNIQUELY YOUR OWN.



# WOOLADDICTS



**ARTSY.** SYMBOLIZING THE PASSAGE OF TIME, THE STITCH PATTERN IN THE LAYERS OF HISTORY SWEATER CREATES AN APPEARANCE REMINISCENT OF GEOLOGICAL LAYERS. THIS EFFECT IS FURTHER ENHANCED BY THE USE OF MULTICOLORED YARN IN THE KNITTING PROCESS.

**LAYERS OF HISTORY** SWEATER PATTERN# 285-033-001



**FOOTPRINTS.** FINDING ONE'S TRUE NORTH IS NOT A FINAL DESTINATION BUT AN ONGOING PROCESS, MUCH LIKE THE CRAFT OF KNITTING. THE TRUE NORTH VEST EMBODIES THIS JOURNEY, REMINDING US THAT EACH STITCH CONTRIBUTES TO THE CONTINUOUS DEVELOPMENT OF SKILL AND SELF-DISCOVERY.

**TRUE NORTH** GILET PATTERN# 285-034-001





**FOOTPRINTS.** DESPITE UNCERTAINTIES, WE ARE INSPIRED TO HEED THE CALL TO ADVENTURE AND EMBARK ON THIS CREATIVE JOURNEY. THE CALL TO ADVENTURE CROCHET BLANKET IS A SIGNIFICANT PROJECT THAT REQUIRES TIME AND DEDICATION. WHILE THE JOURNEY MAY LEAD TO UNEXPECTED OUTCOMES, IT EMBODIES THE SPIRIT OF ADVENTURE AND THE JOY OF EMBRACING THE UNKNOWN.

**CALL TO ADVENTURE** BLANKET PATTERN# 285-035-001





**FOOTPRINTS.** THE WANDERLUST HAT IS THE PERFECT SMALL PROJECT TO TAKE ON A FIELD TRIP, ALLOWING YOU TO KNIT MEMORIES INTO EVERY STITCH. AS YOU WANDER THROUGH LANDSCAPES AND ANCIENT RUINS, THIS HAT BECOMES A TANGIBLE REMINDER OF YOUR ADVENTURES. PORTABLE AND MEANINGFUL, IT CAPTURES THE ESSENCE OF EXPLORATION AND DISCOVERY.

**WANDERLUST** HAT PATTERN# 285-036-001

**ARTSY.** INVITING YOU TO EXPLORE THE VIBRANT WORLD OF COLOR, YARN, AND CROCHET, THE EXPLORATIONS HAT ALSO ENCOURAGES YOU TO DISCOVER YOUR SURROUNDINGS. COMBINING CREATIVE EXPRESSION WITH OUTDOOR ADVENTURES, IT REFLECTS YOUR JOURNEY IN EVERY STITCH.

**EXPLORATION** HAT PATTERN# 285-037-001





# WOOLLADDICTS



**ARTSY.** JUST AS WILDFLOWERS THRIVE UNIQUELY IN THEIR OWN WAY, THE WILDFLOWER GRANNY SQUARE TOP EMBODIES THE SPIRIT OF CREATIVITY AND PERSONAL EXPRESSION. EACH SQUARE BLOSSOMS FROM THE INSIDE OUT LIKE A FLOWER, WITH THE MULTICOLORED YARN ENSURING THAT EVERY ONE IS DISTINCT. THIS TOP CELEBRATES THE BEAUTY OF CRAFTING OUTSIDE THE BOX, REFLECTING THE INDIVIDUALITY OF ITS CREATOR.

**WILDFLOWER** TOP PATTERN# 285-038-001

**CRAFTING** shapes both your project and your **PURPOSE!**



**ARTSY.** THE INNER COMPASS PONCHO HARNESSSES THE REPETITIVE RHYTHM OF CROCHETING TO HELP YOU GET IN SYNC WITH YOURSELF. AS YOU CRAFT EACH STITCH, YOU DISCOVER AND ALIGN WITH YOUR INNER COMPASS, GAINING CLARITY AND DIRECTION.

**INNER COMPASS** PONCHO PATTERN# 285-039-001

# GLOW

66% viscose (lyocell), 26% cotton (organic), 8% polyamid 110m/50g NN 5.5-6



**SUMMER GLOW**  
PATTERN# 285-001-001



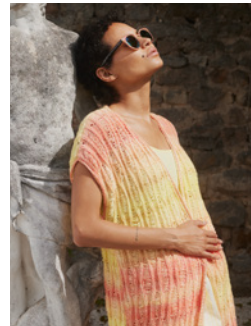
**SUNNY DAY**  
PATTERN# 285-002-001



**GRAPEFRUIT SPRITZ**  
PATTERN# 285-005-001



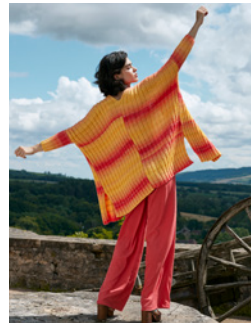
**PINK LEMONADE**  
PATTERN# 285-006-001



**STRAWBERRY FIZZ**  
PATTERN# 285-007-001



**PRINCESS CHARMING**  
PATTERN# 285-014-001



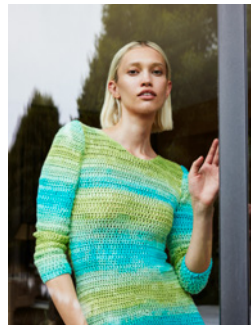
**GRAND ENTRANCE**  
PATTERN# 285-016-001



**CASTLE KEEP**  
PATTERN# 285-018-001



**NATURE WALK**  
PATTERN# 285-021-001



**FRESH-AIR**  
PATTERN# 285-022-001



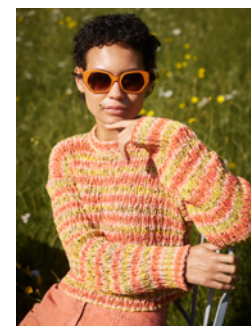
**FLOW OF LIFE**  
PATTERN# 285-026-001



**INNER BALANCE**  
PATTERN# 285-030-001

# ARTSY

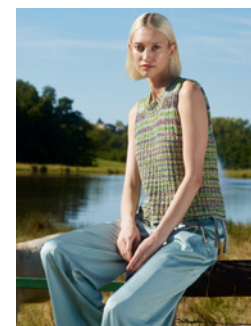
67% cotton, 33% acrylic 270m/100g NN 4-4.5



**FLOWING RIBBONS**  
PATTERN# 285-011-001



**SCAVENGER HUNT**  
PATTERN# 285-013-001



**WAVELETS**  
PATTERN# 285-032-001



**LAYERS OF HISTORY**  
PATTERN# 285-033-001



**EXPLORATION**  
PATTERN# 285-037-001



**WILDFLOWER**  
PATTERN# 285-038-001



**INNER COMPASS**  
PATTERN# 285-039-001

# BLISS

84% cotton, 16% polyamide recycled 240m/50g NN 3.5-4



**BLOSSOMING**  
PATTERN# 285-003-001



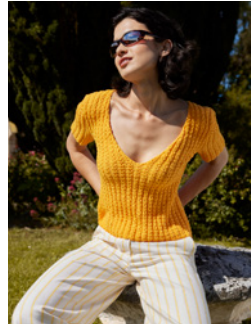
**PERFECT BLOOM**  
PATTERN# 285-004-001



**SPELLBOUND**  
PATTERN# 285-015-001

# BLISS

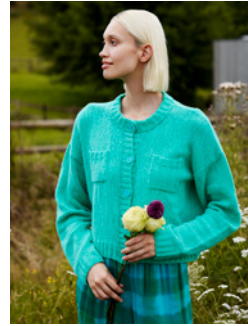
84% cotton, 16% polyamide recycled 240m/50g NN 3.5-4



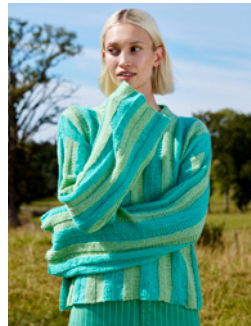
**CLIMBING IVY**  
PATTERN# 285-017-001



**DEEP ROOTS**  
PATTERN# 285-027-001



**LAZY DAY**  
PATTERN# 285-028-001



**DEEP BREATH**  
PATTERN# 285-029-001



**WIND-KISSED**  
PATTERN# 285-023-001



**MORNING MEDITATION**  
PATTERN# 285-024-001

# FOOTPRINTS

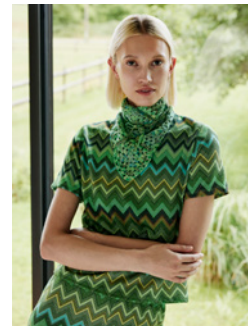
45% cotton, 42% virgin wool, 13% polyamide 400m/100g NN 2.5-3.5



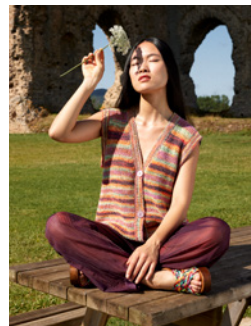
**FLORAL CENTERPIECE**  
PATTERN# 285-010-001



**WIND-KISSED**  
PATTERN# 285-023-001



**MORNING MEDITATION**  
PATTERN# 285-024-001



**TRUE NORTH**  
PATTERN# 285-034-001



**CALL TO ADVENTURE**  
PATTERN# 285-035-001



**WANDERLUST**  
PATTERN# 285-036-001

# PRIDE

40% linen, 32% cotton, 28% viscose 280m/100g NN 3.5-4

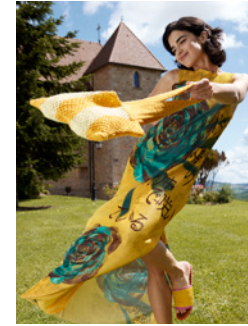


**SUMMER PLAYLIST**  
PATTERN# 285-008-001

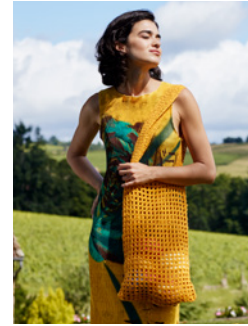
**DAYLIGHT JAM**  
PATTERN# 285-009-001



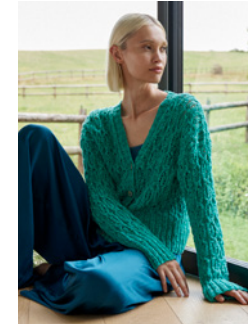
**ENCHANTING**  
PATTERN# 285-012-001



**TREASURE TROVE**  
PATTERN# 285-019-001



**HOARD OF GOLD**  
PATTERN# 285-020-001



**RIPPLE EFFECT**  
PATTERN# 285-025-001



**WAVE OF CALM**  
PATTERN# 285-031-001





**LANG**  
Y A R N S

Quality since 1867



7 611862 353888