

A woman with dark skin and short hair is standing on a rocky beach, looking back over her shoulder with a smile. She is wearing a colorful, multi-colored striped turtleneck sweater and green trousers. She is holding a large, wide, colorful knitted shawl that is spread out behind her, showing a complex geometric pattern in many colors including red, orange, yellow, green, blue, and purple. The background shows the ocean and a cloudy sky.

LANG

Y A R N S

Quality since 1867

F/W

2025/2026

Fall / Winter



New Pattern Books

- 2089.0002 – FATTO A MANO 286 COLLECTION
- 2584.0002 – PUNTO 84 MOSAIC
- 2585.0002 – PUNTO 85 INFINITY
- 2587.0002 – PUNTO 87 DONEGAL
- 2588.0002 – PUNTO 88 HARMONY / MAGNOLIA
- 2589.0002 – PUNTO 89 BABY LAMA

New Yarns

- LANGYARNS ALPACA SOXX TWEED
- LANGYARNS AURORA
- LANGYARNS AVALON
- LANGYARNS BABY LAMA
- LANGYARNS CLASSIC SILK
- LANGYARNS DONEGAL WOOLEN SPUN
- LANGYARNS INFINITY
- LANGYARNS LAMÉ SOFT
- LANGYARNS MERINO120 COLOR
- LANGYARNS MOSAIC
- LANGYARNS NOMAD
- LANGYARNS SUPER SOXX 4PLY
- LANGYARNS SUPER SOXX MERINO 4PLY



ALPACA SOXX TWEED

Now we offer you our ALPACA SOXX 4-ply yarn with tweed flecks. A combination of baby alpaca, virgin wool and nylon means that the yarn is perfect for cosy socks and countless other knitting ideas. ALPACA SOXX TWEED is the ideal choice when the emphasis is on softness and warmth.

Thanks to Easywash treatment, the yarn is machine washable on the wool programme at up to 40 °C.

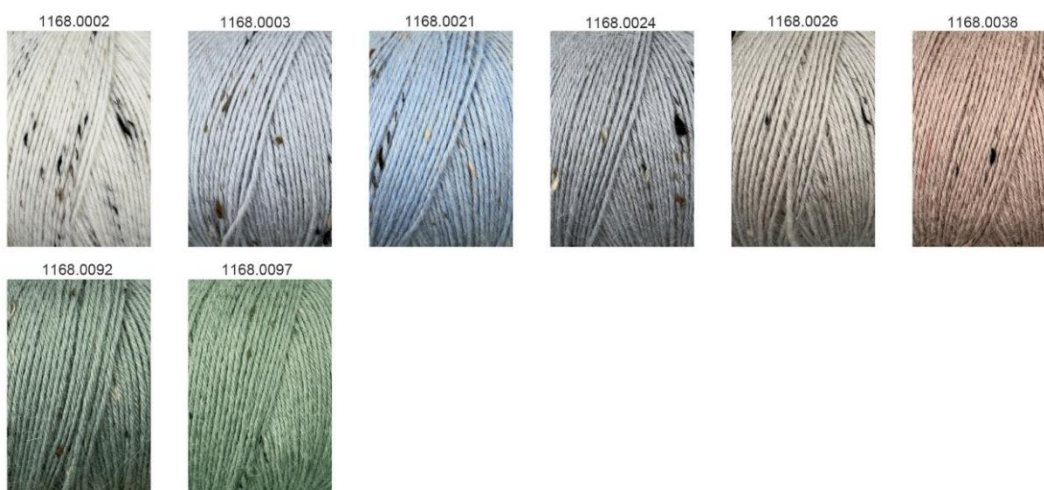
This enzyme treatment for alpaca fibres comes completely without harmful chemicals and is certified by Ökotex, Bluesign and REACH.



ALPACA SOXX TWEED

LANG
Y A R N S

- 66% alpaca (baby), easywash, 29% nylon
5% virgin wool, superwash
- 100g/approx.387m (423yds.)
- needles size 4, US 6, UK 8
- 24stitches/33rows - 10cm x10cm (4"x 4"), Sport
- 8colors



As with any yarn, different needle sizes produce different results with **ALPACA SOXX TWEED**.

For garments, we recommend a **4 mm** needle size, as indicated on the ball band. This creates a lightweight piece with a beautiful drape.

For socks, a **2.5 – 3.5 mm** needle size is recommended to ensure a long-lasting result.



AURORA

As a roving yarn made from 100 % baby alpaca, AURORA offers you warmth and softness for your next project. The colour palette evolves harmoniously, now with delicate shades, then sometimes merging abruptly.

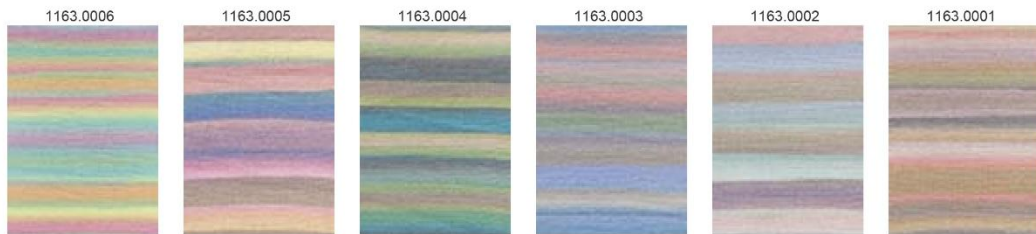
This colourplay brings to mind heavenly phenomena – from serene sunrises to vibrant auroras and dramatic sunsets.

With Aurora, knitting and crochet projects become ethereal artworks, capturing the ephemeral splendour of nature.

AURORA

LANG
Y A R N S

- 100% alpaca (baby)
- 50g/approx.160m (175yds.)
- needles size 4, US 6, UK 8
- 22stitches/31rows - 10cm x10cm (4"x 4"), DK
- 6colors



AURORA

LANG
Y A R N S



FAM 286-15 CHERYL
AURORA 1163.0001 6balls



FAM 286-16 OPHELIA
AURORA 1163.0001 3balls



FAM 286-21 NENA
AURORA 1163.0002 4balls



FAM 286-22 SHIRLEY
AURORA 1163.0002 6balls

AURORA

LANG
Y A R N S



FAM 286-25 KELSEY
AURORA 1163.0004 5balls



FAM 286-26 ROSALBA
AURORA 1163.0004 11balls

AVALON

A woman with long dark hair is shown from the waist up, looking down. She is wearing a vibrant blue knitted vest with a textured, cable-like pattern over a long-sleeved purple shirt. Her trousers are light grey with a vertical ribbed texture. The background is a dark, mottled blue with white, paint-like splatters and drips, creating a moody, artistic atmosphere.

AVALON is a cloud of
extrafine merino wool,
stabilised by a dense,
spun core.

This creates
a yarn that is
at once soft and fluffy,
and also surprisingly
strong.

Like the legendary
Isle of Avalon,
lying hidden in mist,
the yarn has a mysterious,
slightly intangible surface.

An extraordinary yarn for
knitting projects,
combining softness
and structure with
a hint
of mysticism.

AVALON

LANG
Y A R N S

- 60% virgin wool (merino extrafine)
40% virgin wool (merino) superwash
- 50g/approx.82m (90yds.)
- needles size 8, US 11, UK 0
- 11stitches/15rows - 10cm x10cm (4"x 4"), Super Bulky
- 22colors



AVALON

LANG
Y A R N S



FAM 286-17 JENNA
AVALON 1171.0044 6balls



FAM 286-18 JACKY
AVALON 1171.0044 5balls

AVALON

LANG
Y A R N S



FAM 286-43 AMY
AVALON 1171.0017 5balls



FAM 286-44 VERITY
AVALON 1171.0017 1ball

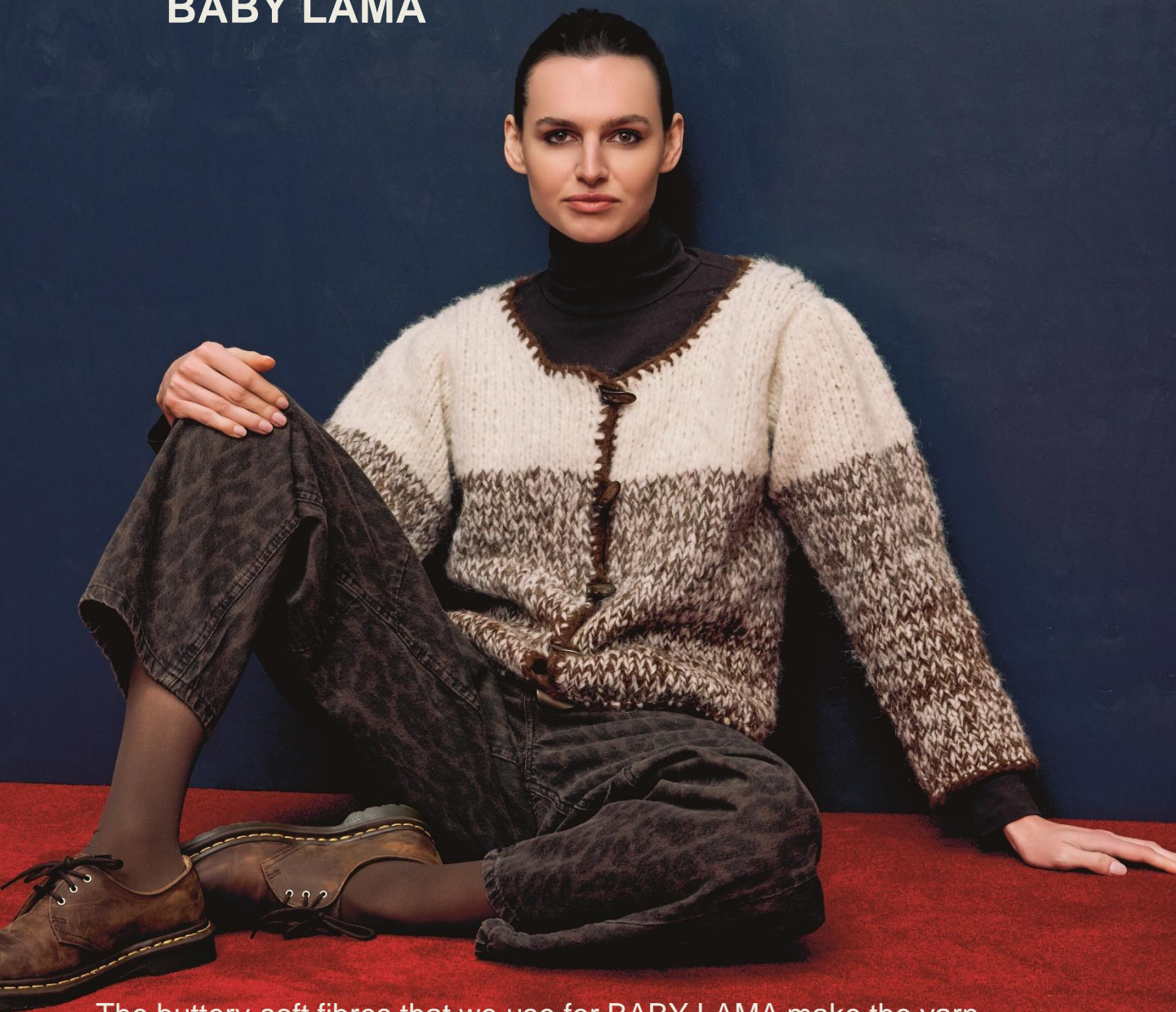


FAM 286-50 JOSIE
AVALON 1171.0074 6balls



FAM 286-51 JULIETTA
AVALON 1171.0074 4balls

BABY LAMA



The buttery-soft fibres that we use for BABY LAMA make the yarn especially gentle on the skin – even for people with sensitive skin and allergies. Compared with other luxury fibres, such as alpaca or cashmere, llama is absolutely as long-lasting and offers exceptional stability, too. With a natural sheen, BABY LAMA brings a subtle elegance to any project; the hollow and semi-hollow fibres provide wonderful thermal insulation and lightness. Our yarn combines the special characteristics of llama fibre with a selection of natural dyes, carefully curated, to bring your creative ideas to life.

BABY LAMA

LANG
Y A R N S

- 88% llama (baby) 12% nylon
- 50g/approx.120m (131yds.)
- needles size 5, US 8, UK 6
- 14stitches/20rows - 10cm x10cm (4"x 4"), Chunky
- 18colors



BABY LAMA

LANG
Y A R N S



PUNTO 89 2589-251 INGRID
BABY LAMA 1170.0021 5balls



PUNTO 89 2589-248 CLAIRE
BABY LAMA 1170.0009 7balls



PUNTO 89 2589-249 ODIL
BABY LAMA 1170.0001 1ball



PUNTO 89 2589-250 KERRY
BABY LAMA 1170.0001 4balls

BABY LAMA

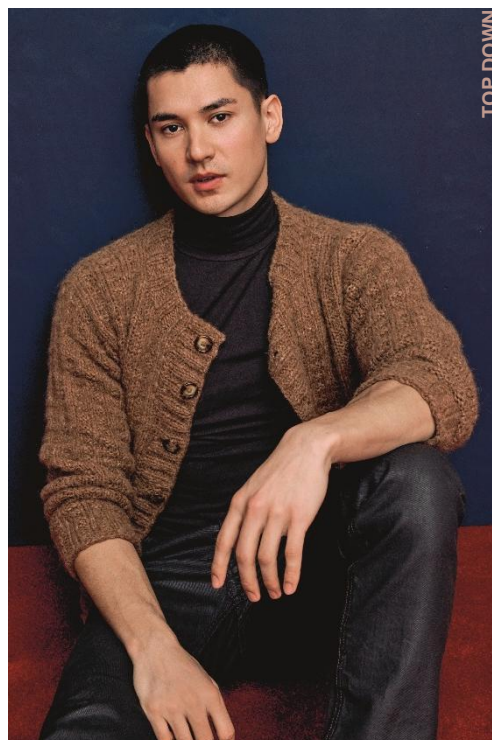
LANG
Y A R N S



PUNTO 89 2589-241 RAMON
BABY LAMA 1170.0096 8balls



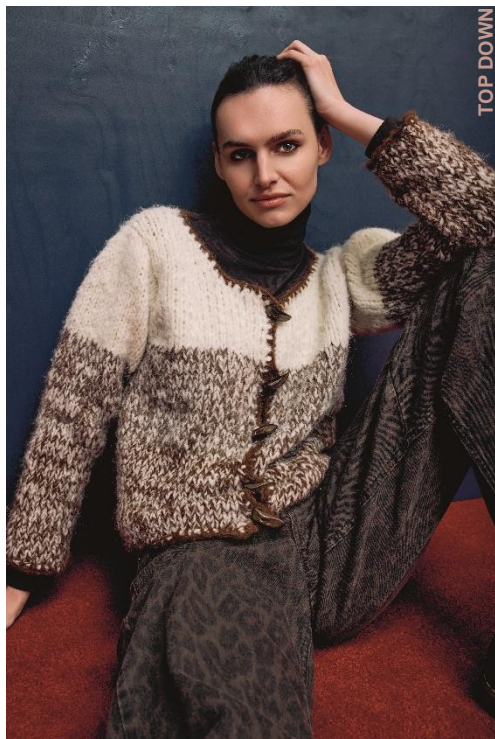
PUNTO 89 2589-246 DEBBIE
BABY LAMA 1170.0027 6balls



PUNTO 89 2589-242 QUENTIN
BABY LAMA 1170.0196 8balls

BABY LAMA

LANG
Y A R N S



PUNTO 89 2589-245 HAZEL

BABY LAMA 1170.0001 6balls

BABY LAMA 1170.0168 / 1170.0096 2balls each

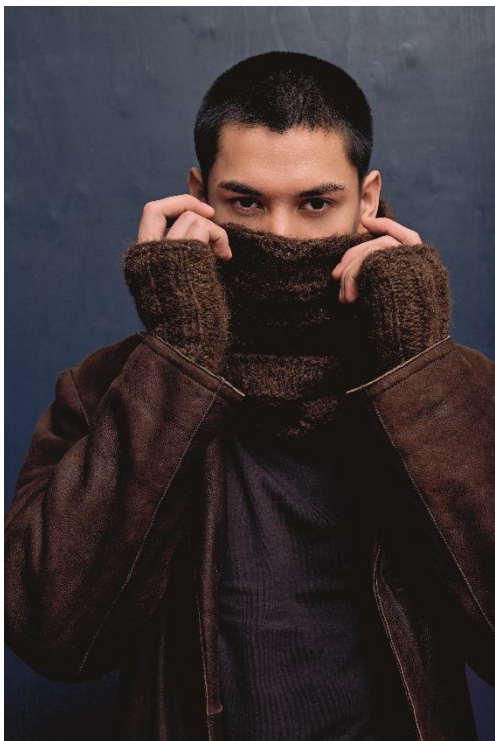


PUNTO 89 2589-247 ELOISE

BABY LAMA 1170.0001 7balls

BABY LAMA

LANG
Y A R N S



PUNTO 89 2589-243 UMEKO
BABY LAMA 1170.0067 2balls



PUNTO 89 2589-244 BRITT
BABY LAMA 1170.0067 1ball



PUNTO 89 2589-243 UMEKO
BABY LAMA 1170.0168 2balls
PAILLETES 39.0068 2balls



PUNTO 89 2589-244 BRITT
BABY LAMA 1170.0168 1ball
PAILLETES 39.0068 1ball

CLASSIC SILK



The name says it all:
CLASSIC SILK is a
traditional 3-ply twist of
fine silk.

The twist gives the yarn a
more rounded
cross-section, which
means that filigree lace
patterns, precise textures
and impressive cables all
work beautifully.

The addition of 30 %
merino wool to the
composition makes it
easier to handle than
pure silk.

This versatile quality
combines timeless
elegance with strength,
making it the perfect
choice for fine
handicrafts with
intricate details,
that will give you
pleasure for a long time.

CLASSIC SILK

LANG
YARNS

- 70% silk (mulberry) 30% virgin wool (merino extrafine)
- 50g/approx.150m (164yds.)
- needles size 3.5-4, US 4-6, UK 9-8
- 26stitches/35rows - 10cm x10cm (4"x 4"), Sport
- 25colors



CLASSIC SILK

LANG
Y A R N S



FAM 286-11 ASHANTI
CLASSIC SILK 1167.0159 6balls



FAM 286-12 SAMANTHA
CLASSIC SILK 1167.0159 9balls

CLASSIC SILK

LANG
Y A R N S



FAM 286-71 RIA
CLASSIC SILK 1167.0048 2balls



FAM 286-72 NOVA
CLASSIC SILK 1167.0048 2balls



FAM 286-73 QUINN
CLASSIC SILK 1167.0048 1ball

DONEGAL WOOLEN SPUN



Crafted using traditional machines and techniques in the Donegal region of Ireland,

DONEGAL WOOLEN SPUN stands out for its uniquely blended color tones. This yarn is produced as a woolen spun yarn, where shorter fibers are loosely spun together without being fully combed or aligned beforehand. In contrast to worsted spun yarn, where fibers are carefully combed and tightly spun, the woolen spun method traps small pockets of air between the fibers. This results in a yarn that is exceptionally lightweight, warm, and lofty. What sets

DONEGAL WOOLEN SPUN apart is not only its pleasantly textured feel but also its subtle play of color. Unlike our **DONEGAL TWEED+**, which features bold, colorful neps, **DONEGAL WOOLEN SPUN** is characterized by delicately blended tones.

The result is a soft, harmonious mélange that gives the yarn depth and vibrancy.

Thanks to its grippy texture, **DONEGAL WOOLEN SPUN** is perfect for traditional stitch patterns like cables or Fair Isle. It holds stitches beautifully and gives structure to any fabric.



DONEGAL WOOLEN SPUN

LANG
Y A R N S



- 100% virgin wool
- 50g/approx.105m (115yds.)
- needles size 4.5-5, US 7-8, UK 7-6
- 17stitches/25rows - 10cm x10cm (4"x 4"), Worsted
- 26colors



DONEGAL WOOLEN SPUN

LANG
Y A R N S



PUNTO 87 2587-081 AINE
DONEGAL WOOLEN SPUN 1172.0050 9balls



PUNTO 87 2587-087 KEELEY
DONEGAL WOOLEN SPUN 1172.0090 2balls



PUNTO 87 2587-146 DEIDRE
DONEGAL WOOLEN SPUN 1172.0190 6balls
DONEGAL WOOLEN SPUN 1172.0090 3balls
DONEGAL WOOLEN SPUN 1172.0046 3balls



PUNTO 87 2587-147 IMOGEN
DONEGAL WOOLEN SPUN 1172.0078 10balls

DONEGAL WOOLEN SPUN

LANG
Y A R N S



PUNTO 87 2587-148 BRENNA
DONEGAL WOOLEN SPUN 1172.0046 12balls



PUNTO 87 2587-149 CLOVER
DONEGAL WOOLEN SPUN 1172.0188 16balls



PUNTO 87 2587-263 SENAN
DONEGAL WOOLEN SPUN 1172.0190/0090/0046 1ball
DONEGAL WOOLEN SPUN 1172.0018/0017/0097 ea



PUNTO 87 2587-263 SENAN
DONEGAL WOOLEN SPUN 1172.0050/0078 1ball ea
DONEGAL TWEED + 1143.0087/0066/0098/0018

DONEGAL WOOLEN SPUN

LANG
Y A R N S



PUNTO 87 2587-264 NIALL
DONEGAL WOOLEN SPUN 1172.0018 7balls
DONEGAL WOOLEN SPUN 1172.0097 5balls



PUNTO 87 2587-266 CALLAHAN
DONEGAL WOOLEN SPUN 1172.0190 14balls



PUNTO 87 2587-267 KAELE
DONEGAL WOOLEN SPUN 1172.0080 11balls

DONEGAL WOOLEN SPUN

LANG
Y A R N S



PUNTO 87 2587-265 EAMON

DONEGAL WOOLEN SPUN 1172.0190 15balls
DONEGAL WOOLEN SPUN 1172.0097/ 0090 3balls
DONEGAL WOOLEN SPUN 1172.0080/ 0017 each



PUNTO 87 2587-268 RONAN

DONEGAL WOOLEN SPUN 1172.0097 15balls
DONEGAL WOOLEN SPUN 1172.0017 2balls
DONEGAL WOOLEN SPUN 1172.0018 3balls
DONEGAL WOOLEN SPUN 1172.0080 4balls

INFINITY

INFINITY is a single ply yarn made with extrafine merino wool, notable for a unique colour design. Each ball is made in such a way that there is no pattern repeat – the same colours appear again and again, but at irregular intervals, in a different sequence and with varying intensity. Whilst it is also suitable for accessories, INFINITY shows its full potential in larger projects such as garments and blankets, where the colourfulness creates a stunning visual experience. Ideal for creatives who appreciate individuality, INFINITY will transform any project into a masterpiece.



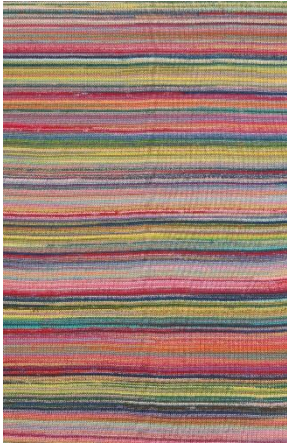
INFINITY

LANG
Y A R N S



- 100% virgin wool (merino extrafine) superwash
- 100g/approx.260m (284yds.)
- needles size 4.5-5, US 7-8, UK 7-6
- 19stitches/28rows - 10cm x10cm (4"x 4"), Worsted
- 4colors

1164.0001



1164.0002



1164.0003

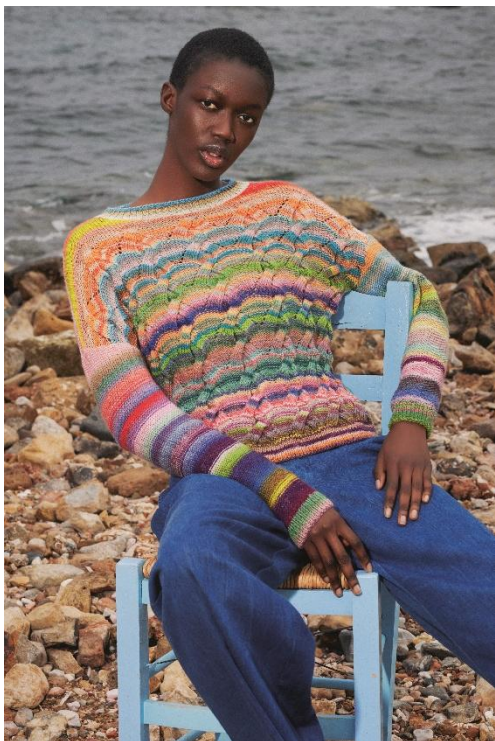


1164.0004



INFINITY

LANG
YARNS



PUNTO 85 2585-035 WILONA
INFINITY 1164.0003 6balls



PUNTO 85 2585-028 RUMER
INFINITY 1164.0001 5balls



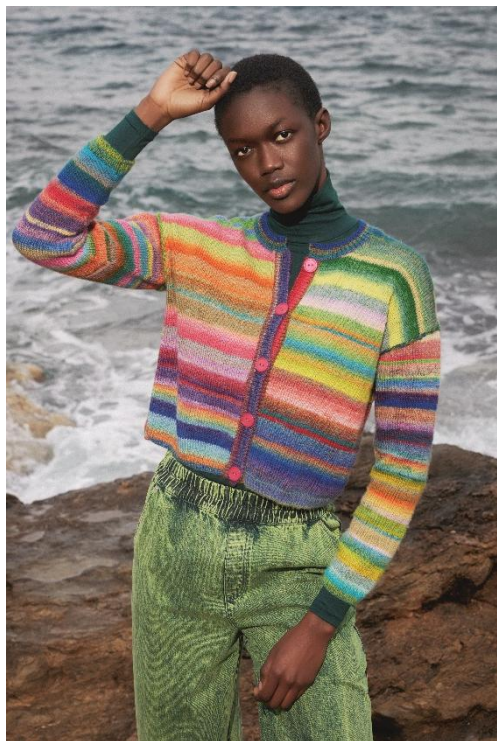
PUNTO 85 2585-037 ODINA
INFINITY 1164.0001 8balls



PUNTO 85 2585-262 ZORYA
INFINITY 1164.0001 or 0002 or 0003 or 0004
2balls

INFINITY

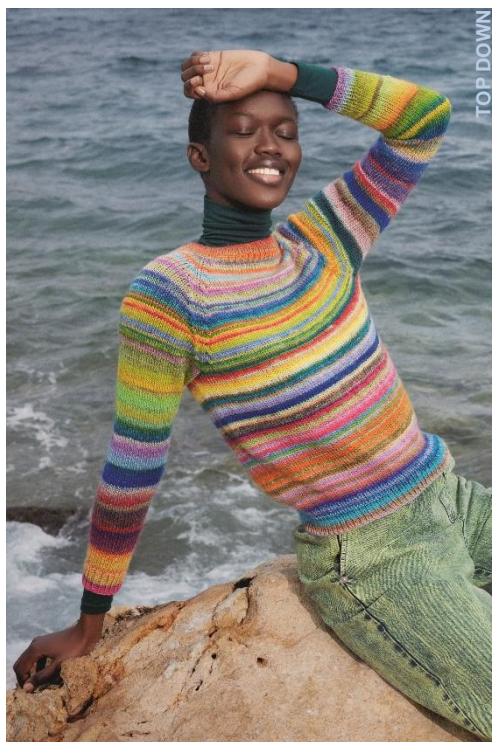
LANG
Y A R N S



PUNTO 85 2585-031 **FABIANA**
INFINITY 1164.0001 5balls



PUNTO 85 2585-029 **ANTHEA**
INFINITY 1164.0003 5balls



PUNTO 85 2585-228 **GREGORIA**
INFINITY 1164.0001 4balls

INFINITY

LANG
Y A R N S



PUNTO 85 2585-203 GINA
INFINITY 1164.0002 3balls



PUNTO 85 2585-227 ALEXA
INFINITY 1164.0003 15balls



PUNTO 85 2585-238 CLIO
INFINITY 1164.0004 1ball



PUNTO 85 2585-038 NADIA
INFINITY 1164.0004 6balls



LAMÉ SOFT

LAMÉ SOFT is a high-quality lamé yarn with a viscose base, notable for a soft handle compared to conventional lamé yarns, which are often based on nylon. It is perfect for knitting along with other yarns to add elegant accents here and there, or for glittery highlights all over a statement piece. Ideal for stylish knits with a touch of glamour!

FAM 286-87 GLINDA
LAMÉ SOFT 56.0003 4balls
ASTRA 1150.0023 2balls

LAMÉ SOFT

LANG
Y A R N S

- 80% viscose 20% polyester (metallic)
- 50g/approx.190m (208yds.)
- needles size 2.5-3.5, US 1.5-4, UK 12-10
- 30stitches/41rows - 10cm x10cm (4"x 4"), Sock/Baby
- 25colors



MERINO120 COLOR



This merino yarn with a self-patterning print lends a multi-coloured effect to your knitting projects, without you having to use any complicated techniques. It is the same soft, high quality yarn as our MERINO 120, but dyed in such a way as to create complex patterns, which are evident even in simple stockinette stitch.

Perfect for baby garments and children's clothing, as the yarn is superwash treated and therefore machine washable.

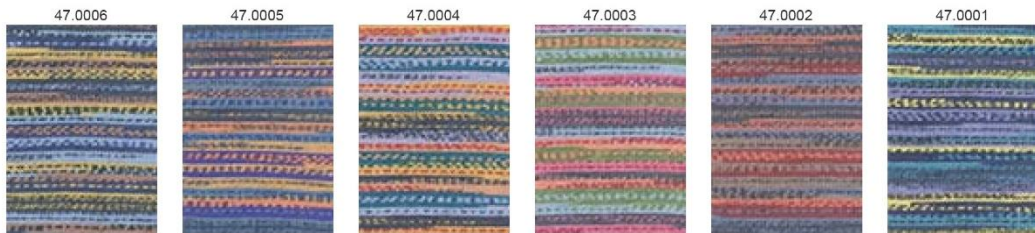
MERINO 120 COLOR is also an excellent choice for adult knits and cosy soft furnishings. Thanks to its softness, durability and impressive patterning, this yarn is an absolute favourite with knitters of all capabilities.

MERINO120 COLOR

LANG
Y A R N S



- 100% virgin wool (merino extrafine) superwash
- 100g/approx.240m (263yds.)
- needles size 3.5-4.5, US 4-7, UK 9-7
- 22stitches/32rows - 10cm x10cm (4"x 4"), DK
- 7colors



MERINO120COLOR

LANG
Y A R N S



BOOKLET 5030.0001 COCO
MERINO120 COLOR 47.0001 2balls



BOOKLET 5030.0001 COCO
MERINO120 COLOR 47.0003 / 0002 / 0004 / 0001



BOOKLET 5030.0001 ALIX
MERINO120 COLOR 47.0006 2balls



BOOKLET 5030.0001 ALIX
MERINO120 COLOR 47.0004 / 0005 / 0006



MOSAIC



A white base tone with short, vibrant bursts of accent colours - MOSAIC will delight knitters who love colour as much as those who prefer subtlety.

Chainette construction and high quality wool make this yarn lofty and light.

A versatile yarn to make the most of both minimalist and creative designs.



MOSAIC

LANG
Y A R N S



- 95% virgin wool (merino) superwash 5% nylon
- 100g/approx.140m (153yds.)
- needles size 8, US 11, UK 0
- 11stitches/18rows - 10cm x10cm (4"x 4"), Super Bulky
- 7colors

1165.0001



1165.0002



1165.0003



1165.0004



1165.0005



1165.0006



1165.0007



MOSAIC

LANG
Y A R N S



PUNTO 84 2584-041 LOTTE
MOSAIC 1165.0007 6balls



PUNTO 84 2584-042 MOLLY
MOSAIC 1165.0004 3balls



PUNTO 84 2584-040 CARLY
MOSAIC 1165.0003 3balls



PUNTO 84 2584-047 WILLOW
MOSAIC 1165.0006 6balls

MOSAIC

LANG
Y A R N S



PUNTO 84 2584-022 PAIGE
MOSAIC 1165.0003 6balls



PUNTO 84 2584-039 MERLE
MOSAIC 1165.0002 2balls



PUNTO 84 2584-045 EUGENIE hat
MOSAIC 1165.0006 2balls

MOSAIC

LANG
Y A R N S



PUNTO 84 2584-260 SERAPHINA
MOSAIC 1165.0005 4balls



PUNTO 84 2584-046 MADDY
MOSAIC 1165.0005 6balls



PUNTO 84 2584-044 GWEN
MOSAIC 1165.0001 8balls



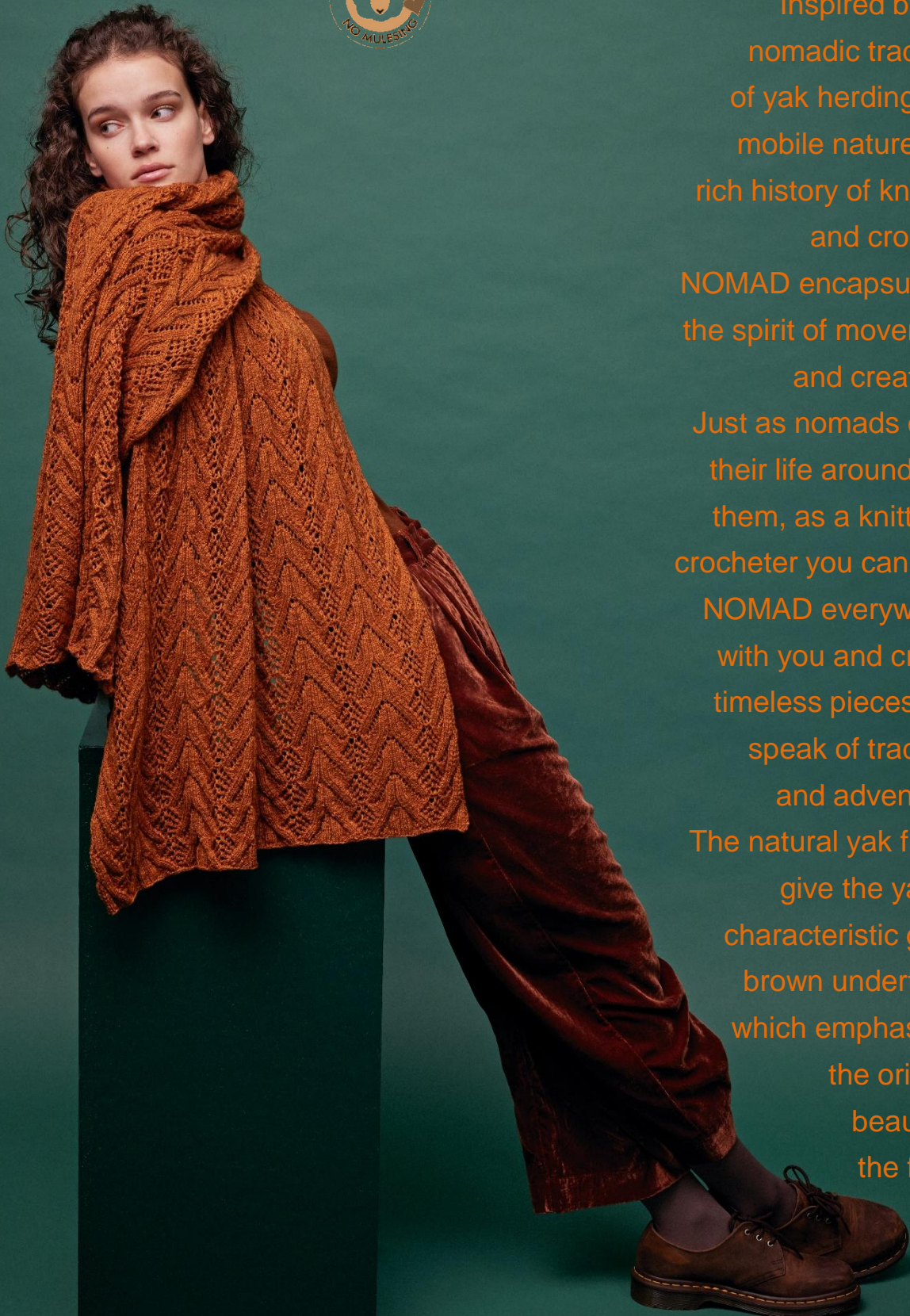
PUNTO 84 2584-043 LIA
MOSAIC 1165.0001 3balls



NOMAD



Inspired by the nomadic tradition of yak herding, the mobile nature and rich history of knitting and crochet, NOMAD encapsulates the spirit of movement and creativity. Just as nomads carry their life around with them, as a knitter or crocheter you can take NOMAD everywhere with you and create timeless pieces that speak of tradition and adventure. The natural yak fibres give the yarn a characteristic grey-brown undertone, which emphasises the original beauty of the fibre.



NOMAD

LANG
Y A R N S



- 85% virgin wool (extrafine) 15% yak
- 25g/approx.125m (137yds.)
- needles size 4-4.5, US 6-7, UK 8-7
- 26stitches/38rows - 10cm x10cm (4"x 4"), Sport
- 14colors



NOMAD

LANG
Y A R N S



FAM 286-03 GILLIAN
NOMAD 1166.0059 15balls



FAM 286-04 UMBRIA
NOMAD 1166.0059 11balls



FAM 286-40 YELISA
NOMAD 1166.0068 6balls
NOMAD 1166.0017/1166.0097 4balls each
NOMAD 1166.0018 2balls



FAM 286-41 TIMEA
NOMAD 1166.0097 3balls
NOMAD 1166.0017 9balls

NOMAD

LANG
Y A R N S



FAM 286-60 FAUVE
NOMAD 1166.0046 5balls



FAM 286-61 RAVEN
NOMAD 1166.0046 10balls

SUPER SOXX 4PLY

LANG
Y A R N S



Finally, our popular SUPER SOXX sock wool is now available in solid colours!

Perfect for combining with bright prints or for anyone who just prefers one colour.

The robust Corriedale wool ensures durable, shapely socks and keeps your feet nice and warm.

So, for a pop of colour or simple elegance – with this uni-coloured variant your creativity will know no bounds!



SUPER SOXX 4PLY

LANG
Y A R N S



- 75% virgin wool superwash 25% nylon
- 100g/approx.420m (459yds.)
- needles size 2.5-3.5, US 1.5-4, UK 12-10
- 30stitches/41rows - 10cm x10cm (4"x 4"), Sock/Baby
- 36colors



SUPER SOXX MERINO 4PLY

LANG
Y A R N S



Our classic SUPER SOXX COLOR now comes with a merino base – for all who appreciate even more softness. Perfect for sensitive feet or for anyone who finds the Corriedale fibres of the original a little too rustic.

Strengthened with durable nylon fibres, the merino wool makes them comfortable to wear whilst also ensuring longevity.

SUPER SOXX MERINO 4PLY

LANG
Y A R N S



- 75% virgin wool (merino extrafine) superwash
25% nylon
- 100g/approx.420m (459yds.)
- needles size 2.5-3.5, US 1.5-4, UK 12-10
- 30stitches/41rows - 10cm x10cm (4"x 4"), Sock/Baby
- 6colors

The high-quality sock yarn
from LANGYARNS!



Air
640.0523



Metall
640.0524



Earth
640.0525



Fire
640.0526



Wood
640.0527



Water
640.0528

Set number **640.1146 ElementSoxx**
Including an original sample sock.
100g balls, 1kg of each color, 6kg
Delivery from week 32/25
Offer available while stocks last.

LANG

Y A R N S

Quality since 1867

WOOL ADDICTS

BY LANGYARNS

PROMISE

**WOOL
ADDICTS**
BY LANGYARNS



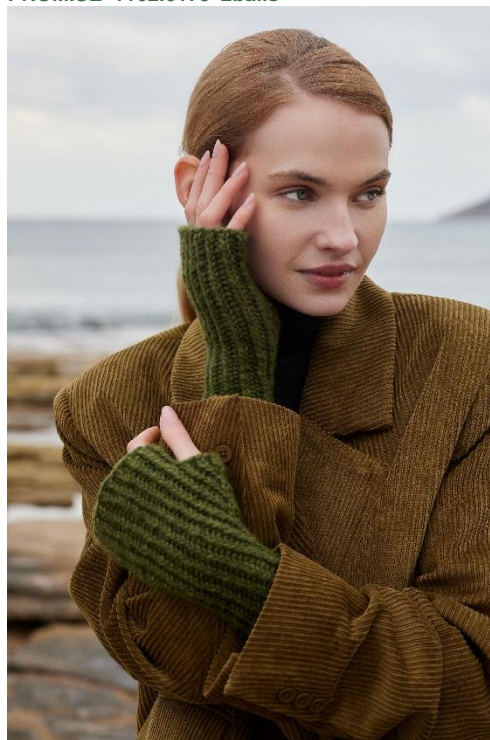
WA 287-020-001 WAVE-BORN
PROMISE 1162.0173 3balls



WA 287-023-001 TIDAL STORIES
PROMISE 1162.0174 3balls
PROMISE 1162.0173 2balls



WA 287-035-001 STRONG ROOTS
PROMISE 1162.0218 4balls



WA 287-043-001 DIVERGING TRAILS
PROMISE 1162.0217 1ball

PROMISE

**WOOL
ADDICTS**
BY LANGYARNS



WA 287-002-001 GATHERING STORM
PROMISE 1162.0146 5balls



WA 287-010-001 SKYBORN
PROMISE 1162.0145 1ball

PROMISE



- 90% virgin wool (merino extrafine) superwash
10% nylon
- 100g/approx.260m (284yds.)
- needles size 7, US 10.5, UK 2
- 13stitches/20rows - 10cm x10cm (4"x 4"), Chunky
- 28colors



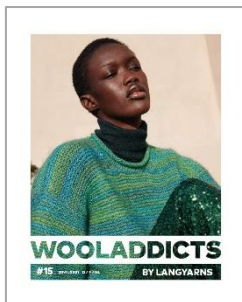
PROMISE



This lightweight yarn is a PROMISE
of pure joy for your next knitting
project. A delicate cloud of merino
fibers is gently held together
by a fine nylon mesh, creating a
yarn that is not only incredibly
soft but also wonderfully lightweight.
We PROMISE that every stitch will
bring comfort and delight!



Fall / Winter



New Pattern Books

2090.0002 – WA #15

2586.0002 – PUNTO 86 MOVE

New Yarns

WOOLADDICTS PROMISE



WOOL ADDICTS

BY LANGYARNS



F/W
2025/2026