

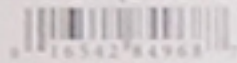
# Harmony

## Cotton





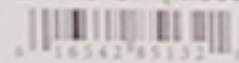
24776 GF (Silver Sage)



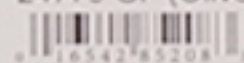
24777 GF (Sage)



24778 GF (Moss)



24779 GF (Olive)



## Harmony Cotton - 2½" Strip Sets



Harmony Brights #1  
(36) skus/(40)strips



Harmony Warm (24) #2



Harmony Cool (24) #3



Harmony Palette (48) #4  
includes Harmony cool & warm



## Harmony Cotton - Fat Quarter Large Sets



Harmony Brights (36) #1



Harmony Warm (24) #2



Harmony Cool (24) #3



## Harmony Cotton - Fat Quarter Small Sets



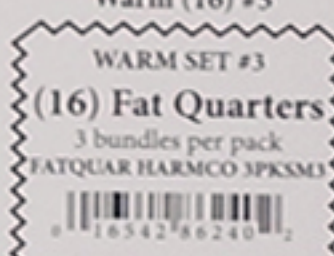
Harmony  
Warm Brights (18) #1



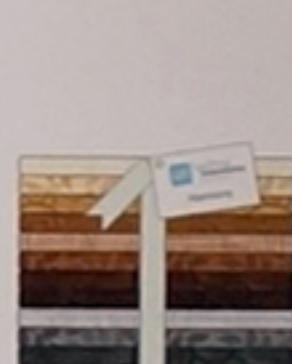
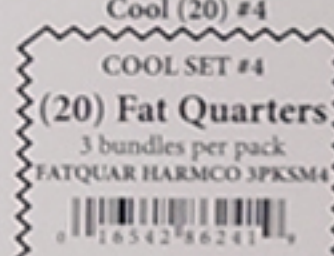
Harmony  
Cool Brights (18) #2



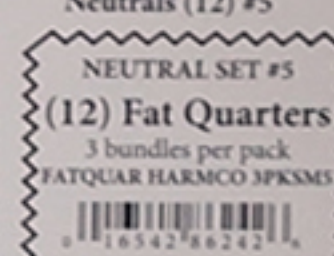
Harmony  
Warm (16) #3



Harmony  
Cool (20) #4

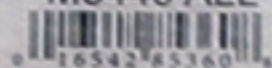


Harmony  
Neutrals (12) #5



Master Sku  
M3449 ALL

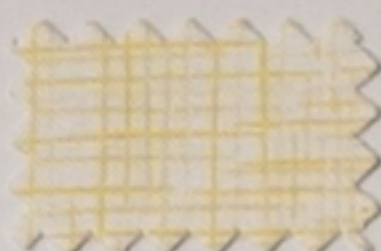
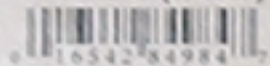
# Harmony - 24776



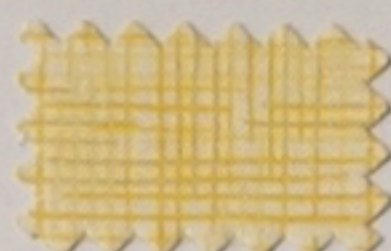
24776 CR (Peony)



24776 O (Melon)



24776 ZS (Butter)



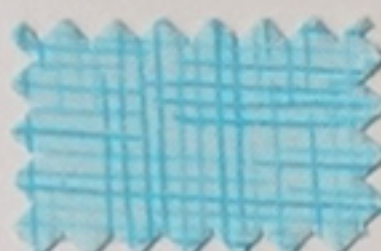
24776 S (Buttercream)



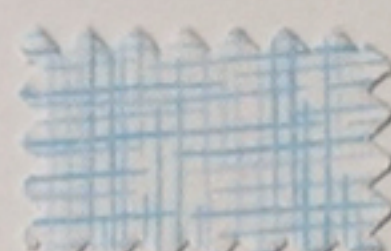
24776 ZH (Soft Green)



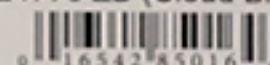
24776 G (Green Mist)



24776 Q (Turquoise Blue)



24776 ZB (Cloud Blue)



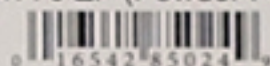
24776 B (Powder Blue)



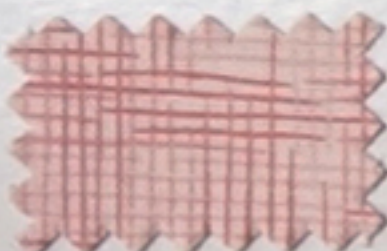
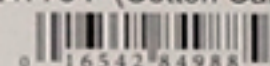
24776 L (Lilac)



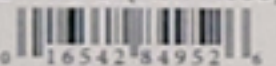
24776 ZP (Powder Pink)



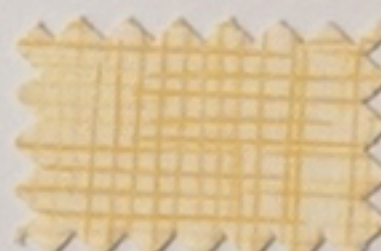
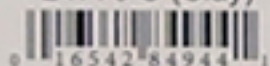
24776 P (Cotton Candy)



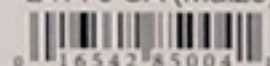
24776 D (Ash Rose)



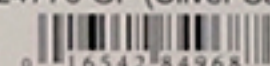
24776 C (Clay)



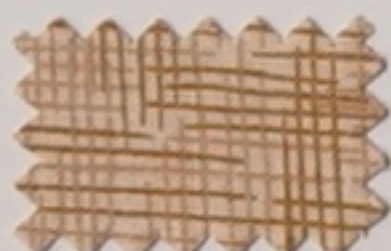
24776 SA (Maize)



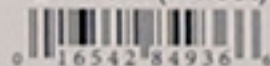
24776 GF (Silver Sage)



24776 E (Vanilla)



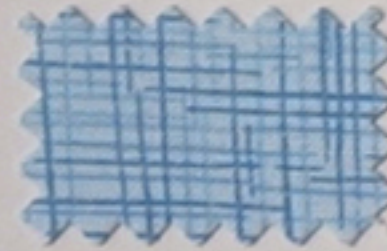
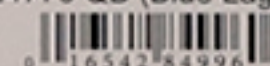
24776 A (Wheat)



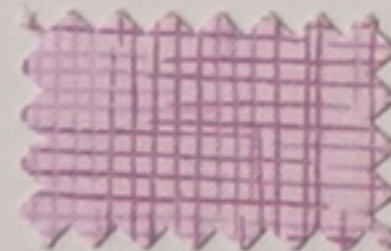
24776 H (Frosted Pine)



24776 QB (Blue Lagoon)



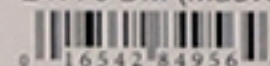
24776 W (Arctic Blue)



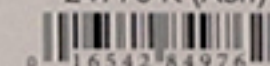
24776 VM (Heather)



24776 DM (Mauve)



24776 K (Ash)



# Harmony - 24777



24777 CR (Geranium)



24777 O (Apricot)



24777 S (Daffodil)



24777 G (Spring Green)



24777 Q (Turquoise)



24777 BY (Blue Aster)



24777 L (Crocus)



24777 P (Party Pink)



24777 D (Dusty Rose)



24777 C (Nutmeg)



24777 SA (Corn silk)



24777 GF (Sage)



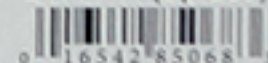
24777 E (Sand)



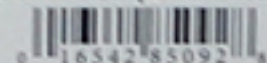
24777 A (Toast)



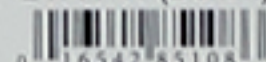
24777 H (Spruce)



24777 QB (Chambray)



24777 W (Denim)



24777 VM (Plum Rose)



24777 DM (Mulberry)



24777 K (Graphite)



# Harmony - 24778



24778 R (Red)



24778 O (Tangerine)



24778 S (Sunflower)



24778 G (Shamrock)



24778 Q (Marine)



24778 Y (Sapphire)



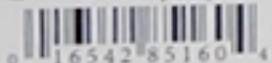
24778 V (Pansy)



24778 P (Bubble Gum)



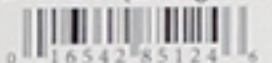
24778 RT (Paprika)



24778 GF (Moss)



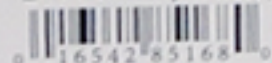
24778 F (Evergreen)



24778 K (Charcoal)



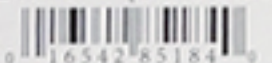
24778 SA (Honey)



24778 QB (Teal)



24778 W (Slate Blue)



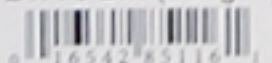
24778 EA (Camel)



24778 VM (Plum Velvet)



24778 DM (Sangria)



24778 T (Terracotta)



24778 A (Sable)



# Harmony - 24779



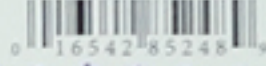
24779 R (Crimson)



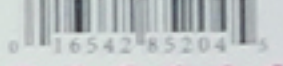
24779 O (Carrot)



24779 S (Marigold)



24779 G (Jungle Green)



24779 Q (Deep Ocean)



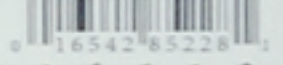
24779 Y (Royal)



24779 V (Grape)



24779 P (Azalea)



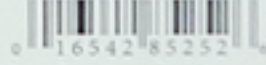
24779 RT (Brick)



24779 T (Rust)



24779 SA (Amber)



24779 GF (Olive)



24779 EA (Toffee)



24779 A (Espresso)



24779 F (Forest)



24779 QB (Prussian Blue)



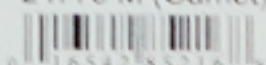
24779 N (Navy)



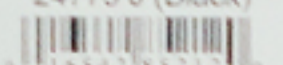
24779 VM (Plum)



24779 M (Garnet)



24779 J (Black)





# Harmony Warm

100% Cotton 60 x 60  
43/44" Wide  
D/R approx. 12 yd. pcs.  
FRC

CAP 1 of 2  
PATTERN NO.

24776 D	24776 GF
24777 D	24777 GF
24778 RT	24778 GF
24779 RT	24779 GF
24776 C	24776 E
24777 C	24777 E
24778 T	24778 EA
24779 T	24779 EA
24776 SA	24776 A
24777 SA	24777 A
24778 SA	24778 A
24779 SA	24779 A

[www.quiltingtreasures.com](http://www.quiltingtreasures.com)







www.quiltingtreasures.com

# Harmony Cool

100% Cotton 60 x 60  
43/44" Wide  
D/R approx. 12 yd. pcs.  
FRC

CAP 2 of 2  
PATTERN NO.  
24776 H 24776 VM  
24777 H 24777 VM  
24778 F 24778 VM  
24779 F 24779 VM  
24776 QB 24776 DM  
24777 QB 24777 DM  
24778 QB 24778 DM  
24779 QB 24779 M  
24776 W 24776 K  
24777 W 24777 K  
24778 W 24778 K  
24779 N 24779 J





100% Cotton 60 x 60  
43/44" Wide  
D/R approx. 12 yd. pcs.  
FRC

CAP 2 of 2  
PATTERN NO.

24776 Q	24776 L
24777 Q	24777 L
24778 Q	24778 V
24779 Q	24779 V
24776 ZB	24776 ZP
24776 B	24776 P
24777 BY	24777 P
24778 Y	24778 P
24779 Y	24779 P

# Harmony Brights

[www.quiltingtreasures.com](http://www.quiltingtreasures.com)





quilting  
treasures

IMAGINE & CREATE

An employee-owned company

# Harmony Cotton

**In - Stock Fabrics!**

Our Customer Service Department is available

Monday-Friday: 8:30 a.m. - 5:00 p.m. EST

Tel: 800.876.2756

Fax: 800.540.7063

email: [info@quiltingtreasures.com](mailto:info@quiltingtreasures.com)

Shop online at [qtfabric.com](http://qtfabric.com)

100% Cotton. 60 x 60.

43/44" wide

D/R approx. 12 yds.

FRC

Machine wash cold, normal cycle only.  
Non-chlorine bleach, tumble dry medium.  
Use warm iron.

Pattern not intended for children's sleepwear. We do not guarantee exact matches on coordinates. Natural irregularities are inherent and characteristic of all fabrics.