



Autumn Collection 2018

14hpi Counted Cross Stitch

Two magical new fairies by Lavinia Stamps



Casting Spells

ref XE9P 36 x 26cm



Rendezvous

ref XE10P 36 x 26cm

Two new Beryl Cook designs



Dancing Class

ref XBC4 26 x 26cm



It Takes Two To Tango

ref XBC5 22 x 27cm

Two new Rosina Wachtmeister designs



After The Storm

ref XRW5 28 x 19cm



Five Cats

ref XRW6 28 x 19cm



Autumn Collection 2018

Wrendale
DESIGNS

by Hannah Dale

Four new designs by Hannah Dale on 14hpi Aida printed with speckles



Hippy Hare
ref XHD38
26 x 26cm

Christmas
Donkey
ref XHD39
26 x 26cm



Flight Of The
Bumblebee
ref XHD41
26 x 26cm



No Cause For
A-Llama
ref XHD40
26 x 26cm

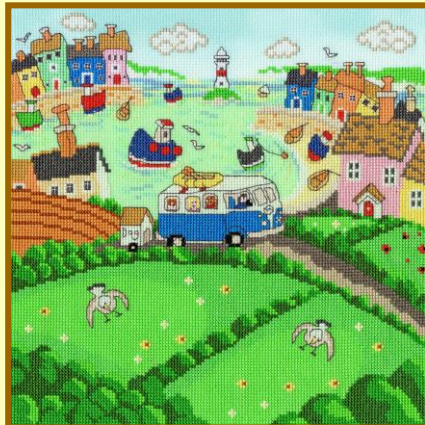


A new sampler by Michelle Grace on 16hpi Aida, a new seaside scene on colour printed 14hpi Aida by Paul Liggins and a new 'Love Country' design by Sarah Reilly on 14hpi vintage brown Aida



Home Is Where The Heart Is
ref XMG1 26 x 26cm

Summer Cove
ref XPL1 26 x 26cm



Heart of the Woodland
ref XSR3 26 x 28cm

Love
Country
by Sarah Reilly



Autumn Collection 2018

Wrendale
DESIGNS
by Hannah Dale

Four new tapestry kits based on Hannah Dale's popular animal designs on 10hpi full colour printed canvas



Jolly Robin
ref THD5
36 x 36cm



Highland Heathers
ref THD9
36 x 36cm



The Nutcracker
ref THD14
36 x 36cm



Bath Time
ref THD16
36 x 36cm



Autumn Collection 2018

Christmas is coming...

New Christmas designs including three new
Christmas Cards all on 14hpi Aida.



Decorating The Tree
ref XX13 26 x 26cm



Robin Wreath
ref XX14 26 x 26cm



Xmas Moose
ref XMAS7 10 x 10cm



Xmas Fox
ref XMAS8 10 x 10cm



Xmas Bear
ref XMAS9 10 x 10cm



Slightly Dotty Snowmen
ref XEJ5 26 x 26cm



Slightly Dotty Xmas Puds
ref XEJ6 26 x 26cm