

2024

PRIMAVERA VERANO
PRINTEMPS ÉTÉ
SPRING SUMMER
FRÜHJAHR SOMMER
LENTE ZOMER
PRIMAVERA ESTATE



Katija®

N.116
CASUAL



C-403 FAIR COTTON INFINITY 104 +
FAIR COTTON 3

520 gr. 2 + 5 





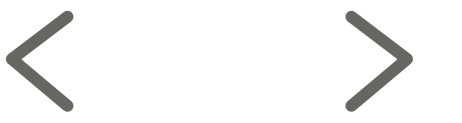
C-802 BLUE JEANS 100-102-105-106-107

334 g. 5 

Contraportada/Quatrième de couverture/Back Cover/Rückseite/Achterpagina/Quarta di copertina

Katifa

N.116 CASUAL



C-15 BLUE JEANS 105-106-107

470 g. 5 

Katifa

N.116 CASUAL



C-404 BLUE JEANS 102-105-106-107

154 g. 4 



C-805 FAIR COTTON INFINITY 103 + FAIR COTTON 43

233 g. 1 + 1 



C-403 FAIR COTTON INFINITY 104 + FAIR COTTON 3

520 g. 2 + 5 



C-500 SUMMER COMFORT 68

495 g. 10 



C-600 AQUA 60

260 g. 6 

Katifa

N.116 CASUAL



C-17 PARAIISO 200

380 g. 4 



C-101 EASY KNIT COTTON 21

385 g. 4 

C-100 EASY KNIT COTTON 17

370 g. 3 



C-800 MISSOURI 44

470 g. 10 

C-401 TENCEL-COTTON 16-7

730 g. 15 



C-807 BEL-AIR 61

340 g. 7 



C-402 BEL-AIR 51

210 g. 5 

Katifa

N.116 CASUAL



C-806 LE BAMBOU 102

170 g. 2 



C-103 A+B MACRAMÉ CORD FINE 200-205-214-208

500 g. 4 

C-400 COTTON 100% 57

700 g. 14 

Katifa

N.116 CASUAL





C-405 RECY-TWEED 83

450 g.9 



C-102 A EASY KNIT COTTON 1
C-102 B EASY KNIT COTTON 15

290 g. 3 
290 g. 3 

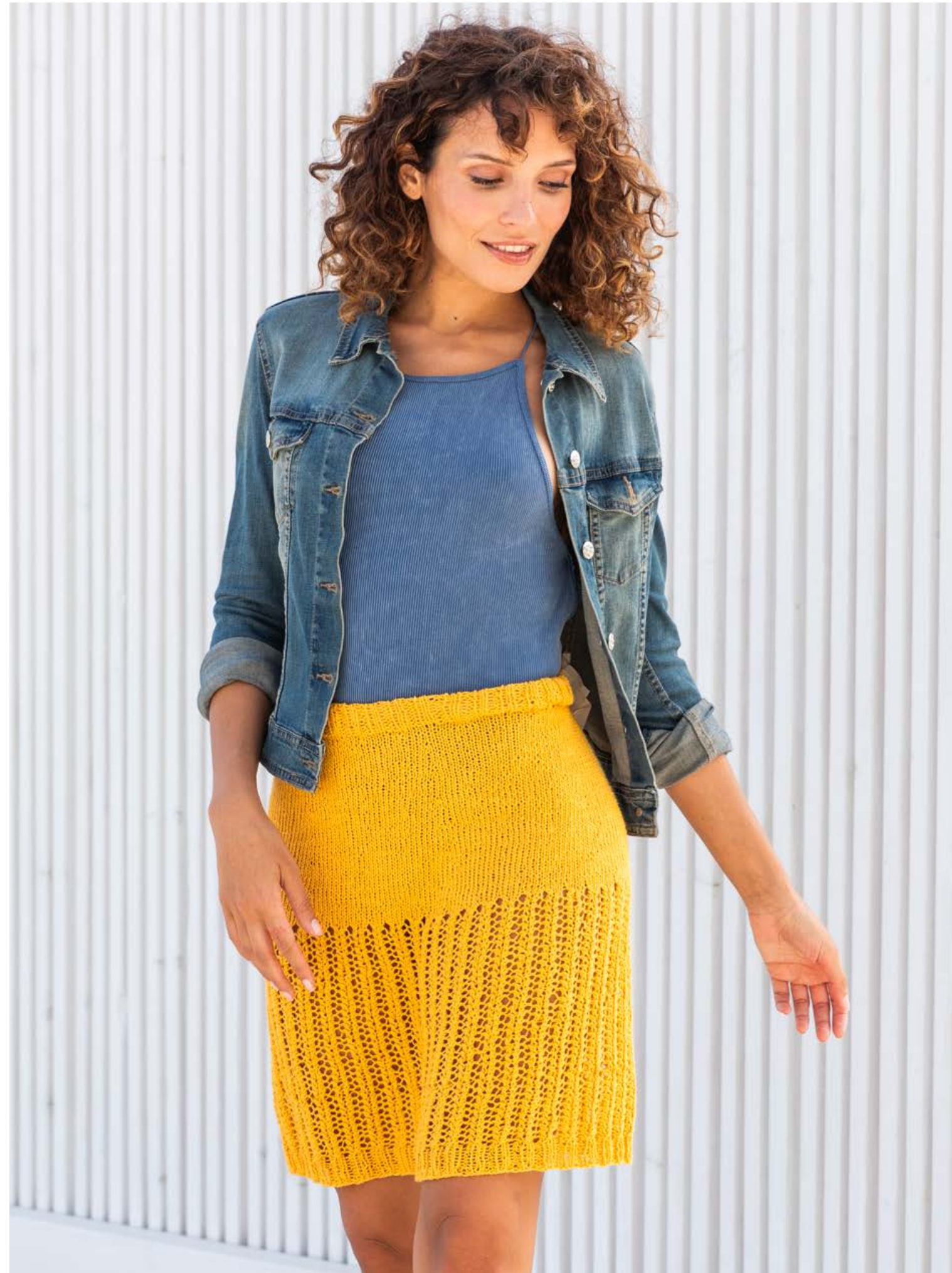


C-07 EASY KNIT COTTON 15-22-7

830 g. 9 

C-22 SUMMER PON PON 52

200 g. 4 



C-801 LINEN 33

230 g. 5 



C-18 FAIR COTTON INFINITY 107 + FAIR COTTON 23

490 g. 2 + 4 



C-06 ALABAMA 66

500 g. 10 

C-804 PARAISO 204

390 g. 4 

Katifa

N.116 CASUAL



C-803 SUMMER PON PON 51

430 g. 9



C-24 BEL-AIR 52

250 g. 5 