

Six new designs by Hannah Dale on 14hpi Aida
custom printed with brown speckles!

Chitter Chatter

ref XHD77 26x26cm



Mother Duck

ref XHD81 38x18cm



Hand-Picked For You
ref XHD79 26x26cm



Daisy Mouse

ref XHD80 26x26cm



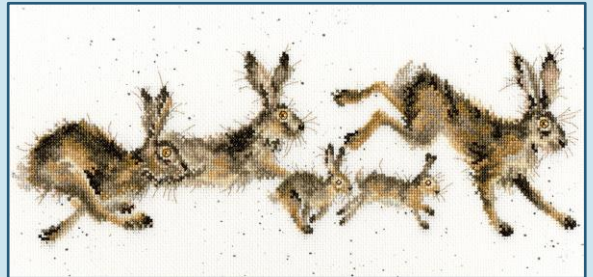
Buttercup

ref XHD78 30x20cm



Spring In Your Step

ref XHD82 38x18cm



////// Tapestry ////

Two new tapestry kits on 10hpi full colour printed canvas.

Daisy Coo
ref THD42
36x36cm
(14x14 inches)



Mother Hen
ref THD50
36x36cm
(14x14 inches)





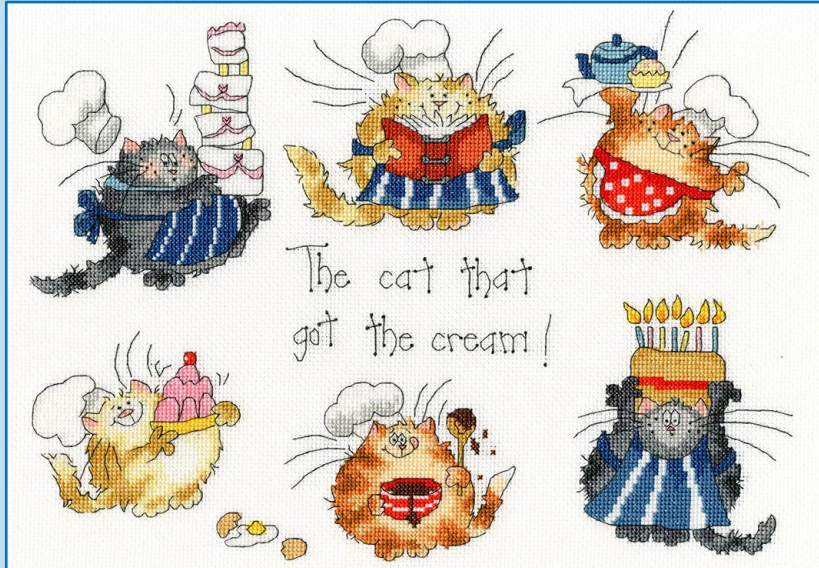
XXXXX Counted Cross Stitch XXXXX Spring Collection 2021



More of Margaret Sherry's cute creatures!
The larger pictures are on 14hpi and the cards on 16hpi Aida.



I ♥ U
ref XMS25 28x13cm



The Cat That Got The Cream
ref XMS26 36x25cm

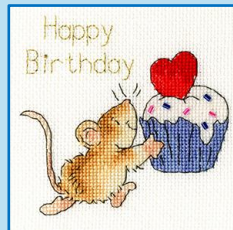


Threads included
for Boy or Girl!

Hello Baby!
ref XGC21 10x10cm



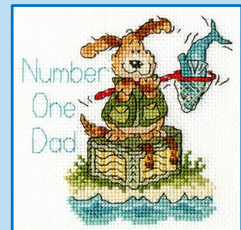
Sprinkles On Top
ref XGC22 10x10cm



Birthday Balloons
ref XGC23 10x10cm



Number One Dad
ref XGC24 10x10cm





XXXXX Counted Cross Stitch XXXXX

Spring Collection 2021

New seasons designs by Amanda Loveseed.

Stitched on 14hpi Aida with Organza overlay. Autumn and Winter to follow!

Spring Time
ref XAL3 24x24cm

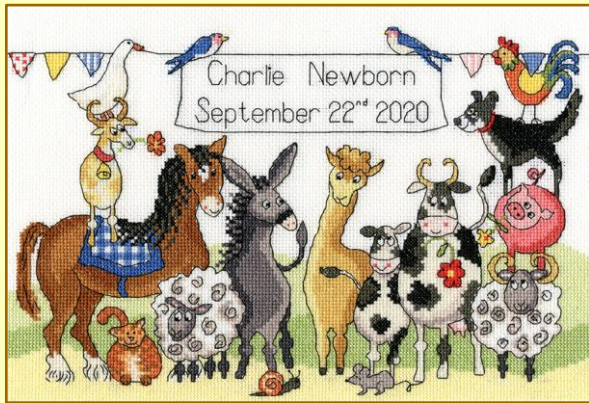


Summer Time
ref XAL4 24x24cm



New Baby Samplers

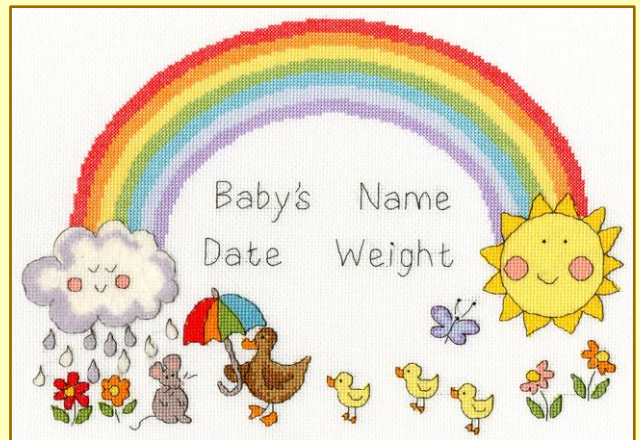
Stitched on 14hpi Aida



Something To Crow About

ref XNB6 31x21cm

by Julia Rigby



Rainbow Baby

ref XNB7 33x23cm

by June Armstrong

New Fun designs by Julia Rigby

Stitched on 14hpi Aida



Sewing Fun

ref XJR38 37x16cm



Baking Fun

ref XJR39 37x16cm

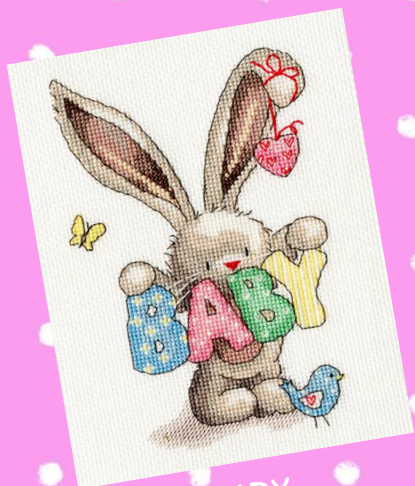


XXXXX Counted Cross Stitch XXXXX

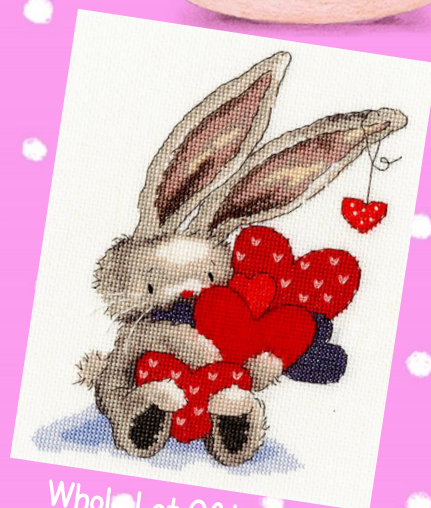
Spring Collection 2021

Bebunni

New Bebunni designs
on 14hpi Aida.



BABY
ref XBB20 15x19cm



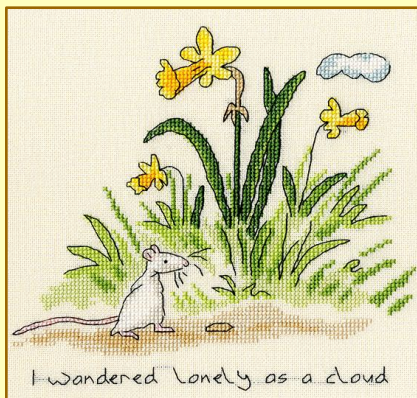
Whole Lot Of Love
ref XBB21 16x20cm

Three more adorable animals by Anita Jeram.

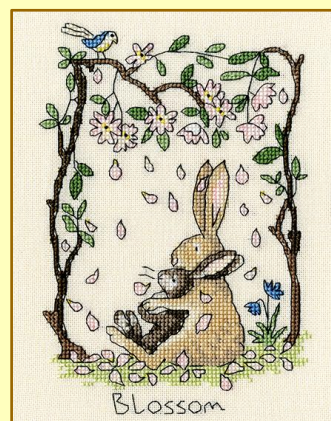
Supplied with 14hpi Aida, available on request with 27hpi evenweave.



Collecting kisses
ref XAJ9 15x19cm



Lonely as a cloud
ref XAJ10 19x18cm



Blossom
ref XAJ11 15x19cm

////// Tapestry ////

Two new kits based on William Morris' textiles from the late 1800s.

12hpi full colour printed canvas.

Dove And Rose
ref TAC12
36x36cm
(14x14 inches)



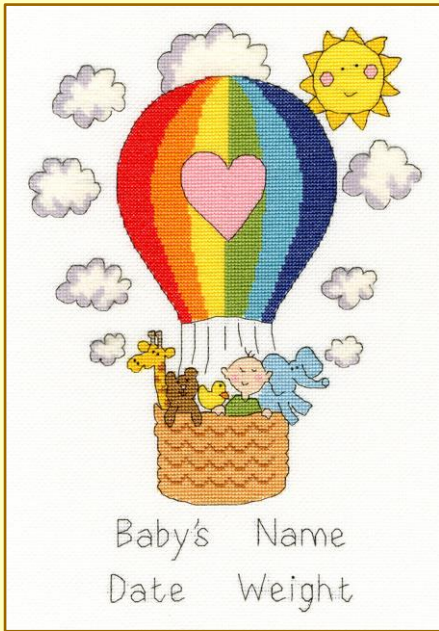
Brier Rabbit
ref TAC13
36x36cm
(14x14 inches)





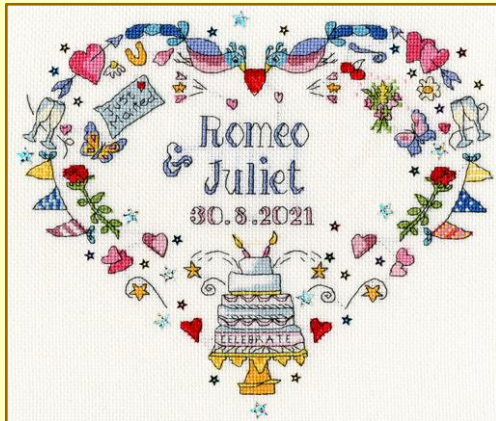
Summer Collection 2021

Colourful samplers for Summer!
Stitched on 14hpi Aida.



Balloon Baby

ref XNB8 23x33cm
by June Armstrong



Made For Each Other

ref XAL7 26x22cm
by Amanda Loveseed

Tropical Height Chart
ref XEJ10 25x102cm



Summer Collection 2021

Four new designs by Hannah Dale.

Stitched on our custom printed brown speckle 14hpi Aida, finished size 26x26cm.



Thanks A Bunch
ref XHD83



Milk Maid
ref XHD84



Grinny Pig
ref XHD85



Let It Bee
ref XHD86

Two towers full of Margaret Sherry's cute creatures!

Stitched on 14hpi Aida they are 14x27cm.



Top Cat
ref XMS27



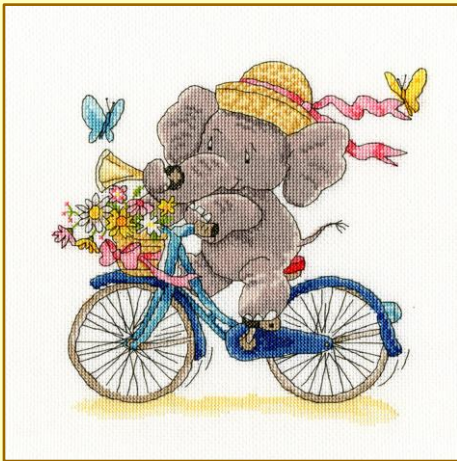
Top Dog
ref XMS28

Elly's new hobbies!

Stitched on 14hpi Aida, they are 24x24cm.

Are We N-Elly There?

ref XEL9



Bloomin' Lovelly
ref XEL10

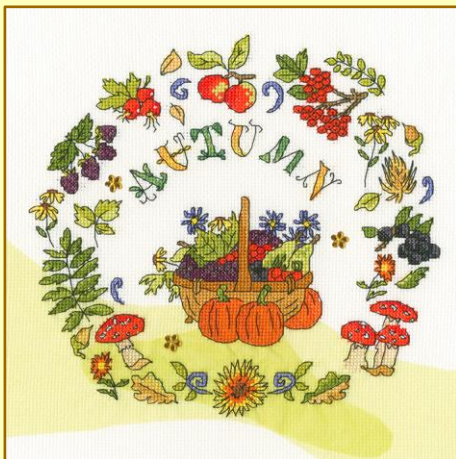


New seasons designs by Amanda Loveseed.

Stitched on 14hpi Aida with Organza overlay, to complement the Spring Time and Summer Time designs.

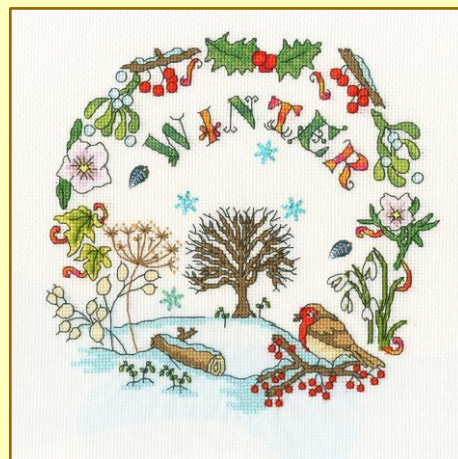
Autumn Time

ref XAL5 24x24cm



Winter Time

ref XAL6 24x24cm

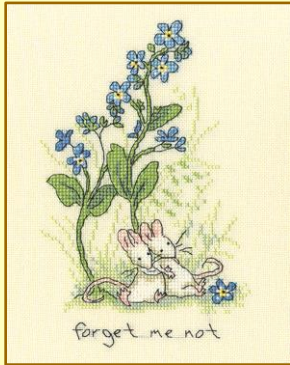


Summer Collection 2021

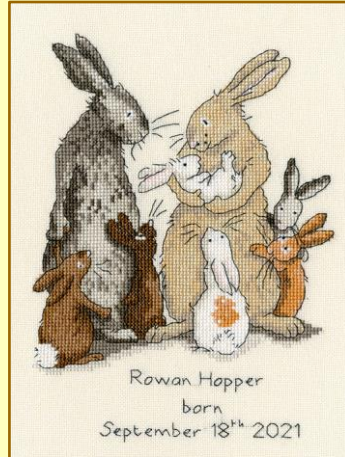
More adorable animals by Anita Jeram,
including a wedding and birth sampler:

Supplied with 14hpi cream Aida, 27hpi evenweave available on request.

Forget me not
ref XAU12 15x19cm



Welcome to the warren
ref XAU15 18x24cm



Mice day for
a white wedding
ref XAU14 25x19cm



Sunshine of my life
ref XAU13 14x19cm



Two vibrant additions to Fay Miladowska's 'Garden' range.

Stitched on 14hpi Aida, finished size 25x25cm.



Poppy Garden
ref XFY1



Sunflower Garden
ref XFY2

Summer Collection 2021

Two tapestry versions of Hannah's popular designs on 10hpi full colour printed canvas. Finished size 58.5x28.5cm (23x11 inches) to fit a 60x30cm (24x12 inches) cushion pad.

Mother Duck
ref THD81



Spring In Your Step
ref THD82

A new tapestry based on traditional sampler styles by Bothy Designs.



Orchard House
10hpi full colour printed canvas
ref TAP7 36x36cm
(14 inches square)

Summer Collection 2021

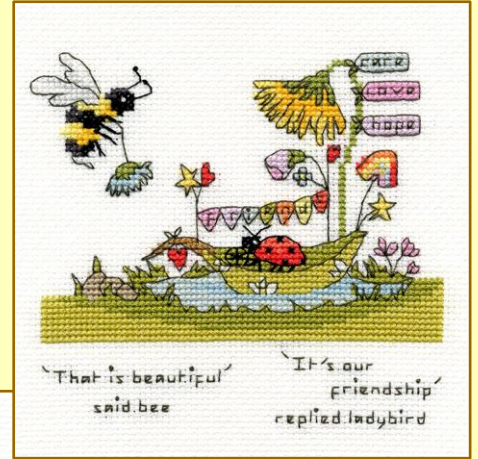
Welcome to a new local artist, Eleanor Teasdale, based in Penrith.

Stitched on 16hpi Aida, 'Bee and Ladybird' are 12x12cm,

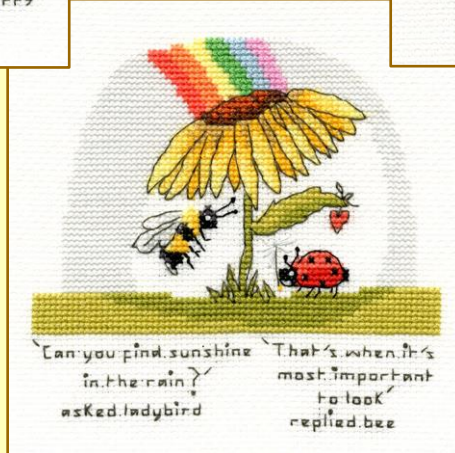
while the 'Bee' greetings cards are supplied with a 9x13cm oval cream card.



You Make Me Happy
ref XETE1



Beautiful Friendship
ref XETE3



Finding Sunshine
ref XETE2



Bee Happy
ref XGC25



Bee Lucky
ref XGC26



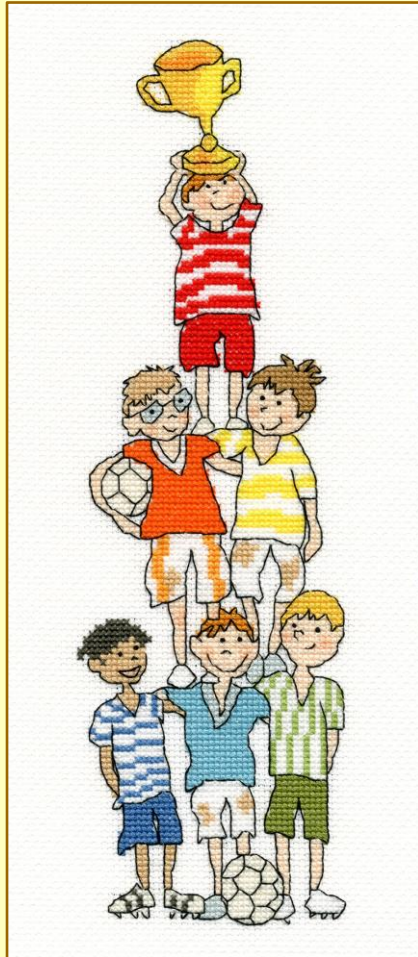
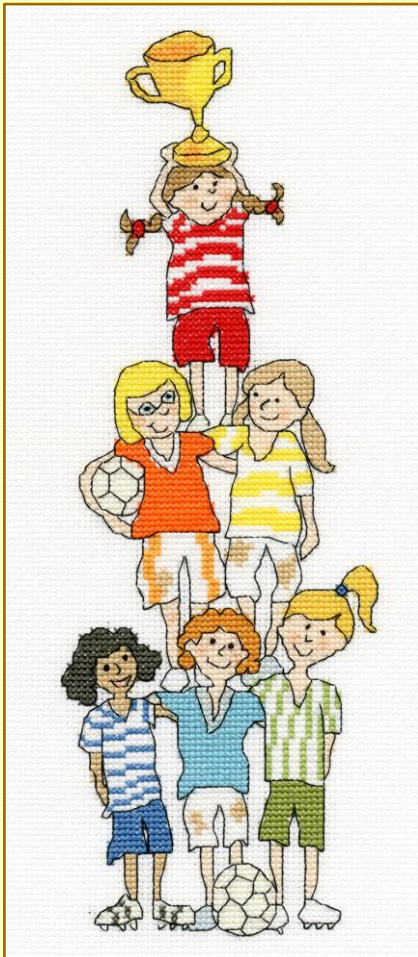
Bee Kind
ref XGC27



XXXXX Counted Cross Stitch XXXXX

Summer Collection 2021

Summer sports have arrived, with new designs
by June Armstrong and Julia Rigby!



We're The Champions!

by June Armstrong

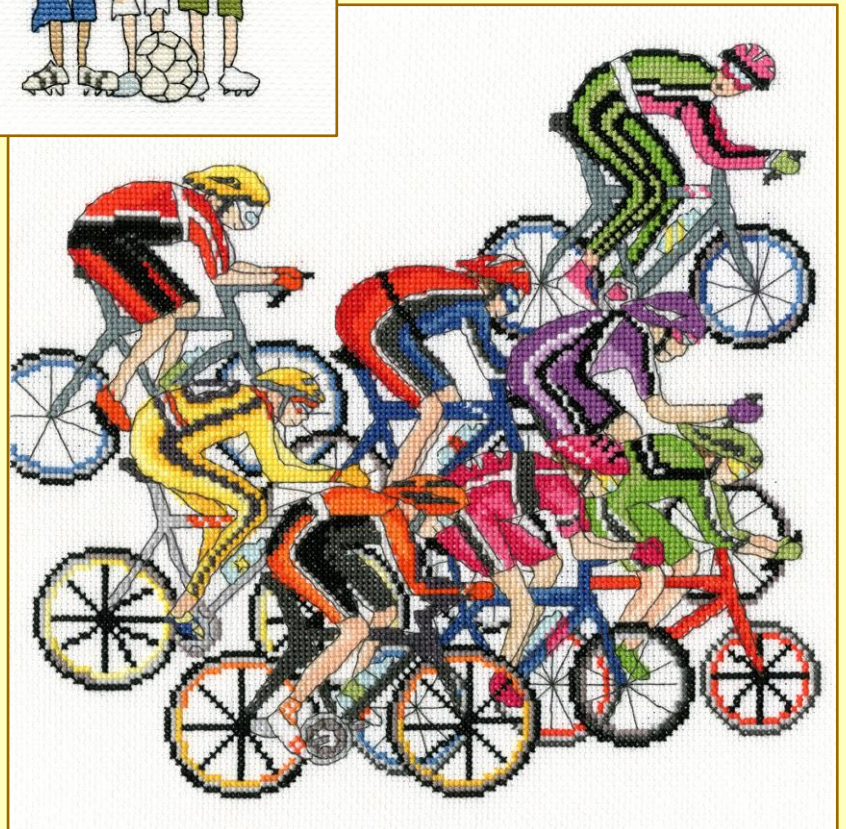
14hpi ref XJA11 13x30cm

There are charts for a boys' team
and a girls' team. You can also create
your own mixed team - just use the
players that you want!

Cycling Fun

by Julia Rigby

14hpi ref XJR40 26x26cm

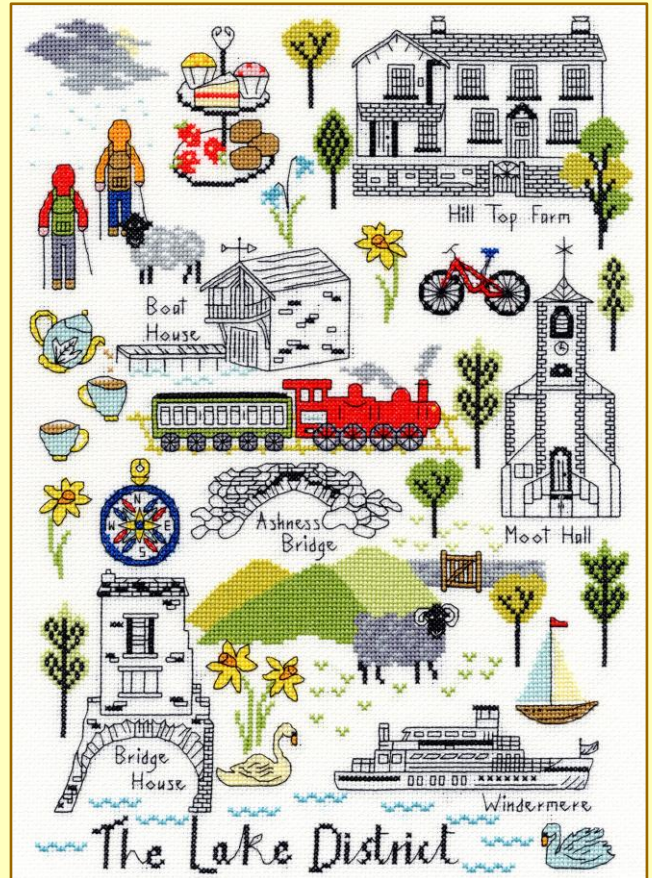


Summer Collection 2021



'Let There Be Light',
a traditional style sampler
by Bothy Designs.
Stitched on 16hpi Aida,
finished size 28x39cm
ref XBD17

'Love The Lakes',
a sampler of Lake
District landmarks
by Jessica Hogarth.
Stitched on 14hpi Aida,
finished size 26x36cm
ref XLS8



Christmas Collection 2021

Margaret Sherry's cute creatures celebrate Halloween and Christmas!



Trick Or Treat
ref XMS29 29x24cm
14hpi misty blue Aida



Merry Catmas
ref XMS30 53x18cm
14hpi white Aida



Christmas Dozen
ref XMS31 42x40cm
16hpi white Aida



Eight new Christmas cards by Margaret Sherry.

PPP Penguin stitched on 16hpi winter blue Aida, with a square cream card, finished size 10x10cm. The other four designs are stitched on 16hpi white or antique white Aida with oval cards as shown.



PPP Please Santa
 ref XMAS33



PPP Presents
 ref XMAS35



PPP Playing Snowballs
 ref XMAS34



PPP Prickly Holly
 ref XMAS36

Frosty Fun
 ref XMAS37



The First Noel
 ref XMAS39



Stocking Fillers
 ref XMAS38

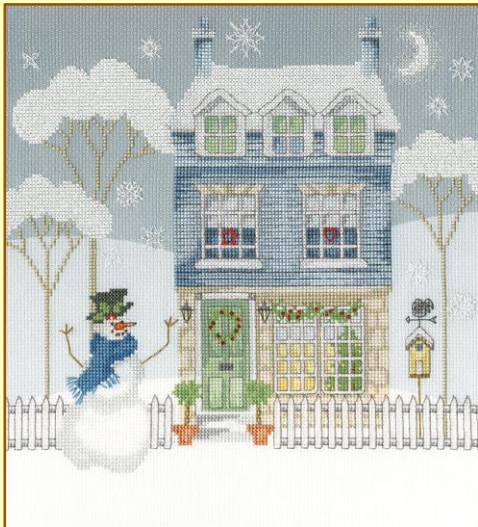


Swing Into Christmas
 ref XMAS40

Christmas Collection 2021

Two snowy Christmas designs by Karen Tye Bentley.

Both are on 14hpi Aida, Home For Christmas has the background colour printed while Snowy Friends is worked on winter blue Aida.



Home For Christmas
ref XKTBI 25x28cm



Snowy Friends
ref XKTBI 26x20cm

Two new 'Blooms' based on Japanese woodblock prints

Stitched on 14hpi cream Aida, finished size 36x24cm.

Orchid Blooms
ref XBD16



Poppy Blooms
ref XBD15

Four new designs by Hannah Dale.

Stitched on our custom printed blue or brown speckle 14hpi Aida, finished size 26x26cm.



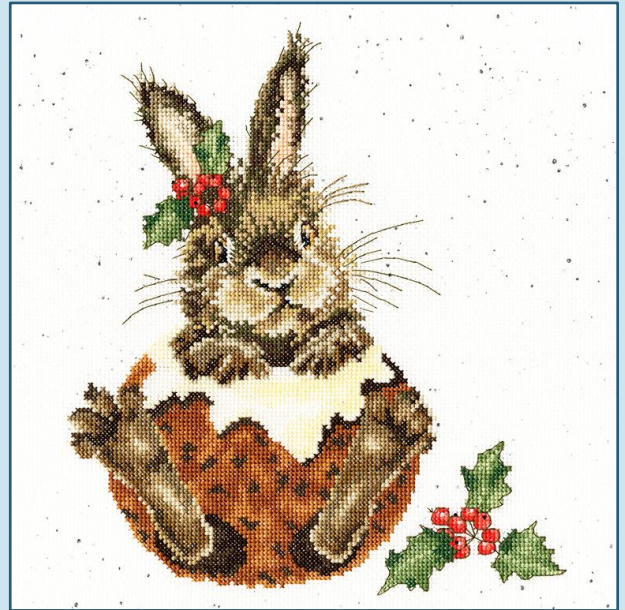
The Emperor's New Chick
ref XHD87



Sweet Dreams
ref XHD88



Tree Hugger
ref XHD89



Little Pudding
ref XHD90

Christmas Collection 2021

Two tapestry versions of Hannah's popular designs.

10hpi full colour printed canvas.



Christmas Donkey

ref THD39

36x36cm (14 inches square)



Rockin' Robins

ref THD69

58.5x28.5cm (23x11inches)

Two new tapestries based on William Morris' wallpaper designs and a tapestry version of Sarah Summer's sampler.



Vase Of Tulips

12hpi full colour printed canvas

ref TAC14 36x36cm

(14 inches square)

Home Sweet Home
10hpi full colour printed canvas
ref TSS5 36x36cm
(14 inches square)



Vase Of Roses

12hpi full colour printed canvas

ref TAC15 36x36cm

(14 inches square)

New Bebunni designs
on 14hpi Aida.



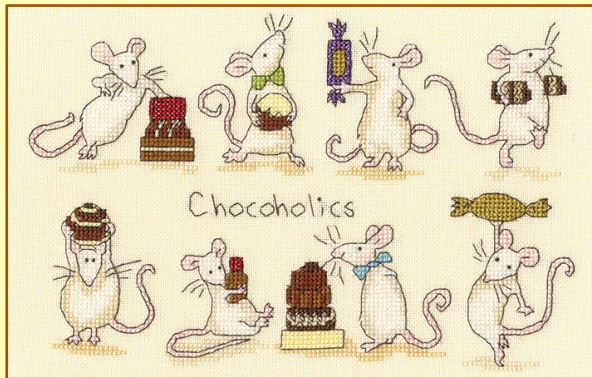
Playtime
ref XBB22
20x21cm

BIRTHDAY
ref XBB23
16x18cm

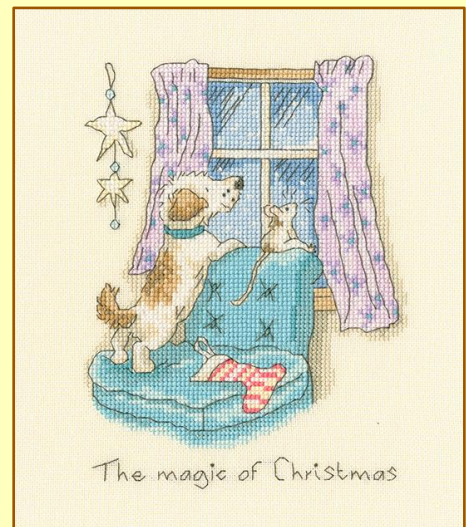


More adorable animals by Anita Jeram.

Supplied with 14hpi cream Aida, 27hpi evenweave available on request.



Chocoholics
ref XAJ16 24x15cm



The magic of Christmas
ref XAJ17 14x19cm



Elly celebrates Christmas!

Stitched on 14hpi white Aida,
finished size 24x24cm.



Elly's Snow Day
ref XEL11

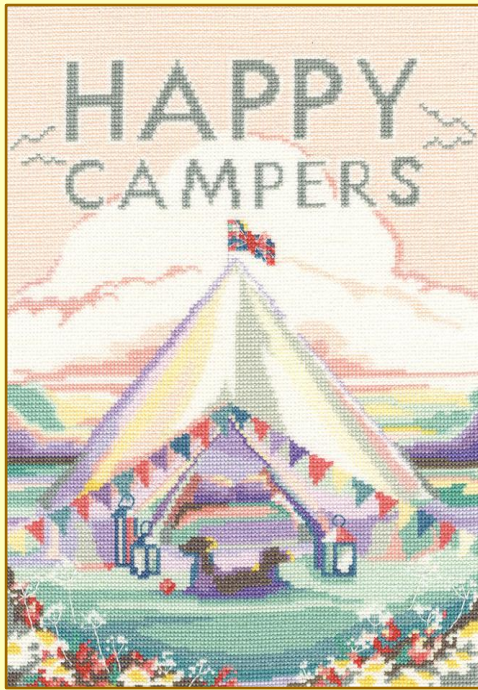


XXXXX Counted Cross Stitch XXXXX

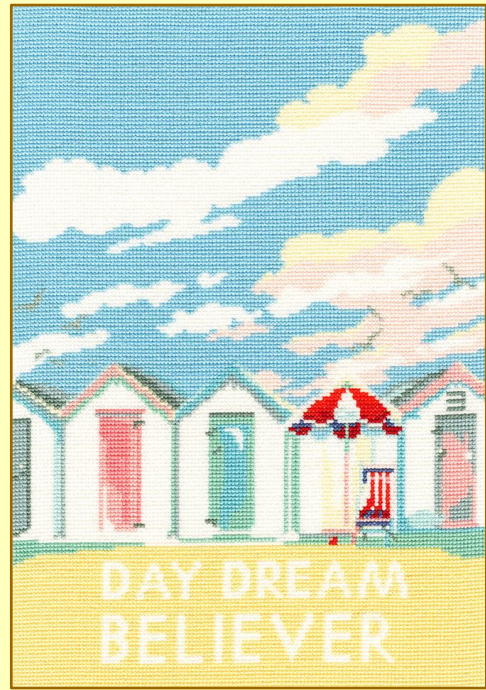
Christmas Collection 2021

Introducing six new designs by artists Becky Bettsworth,
Hilary Yafai and (over the page) Sharon Turner

Betty's retro designs are stitched on 14hpi white Aida, finished size 23x33cm.

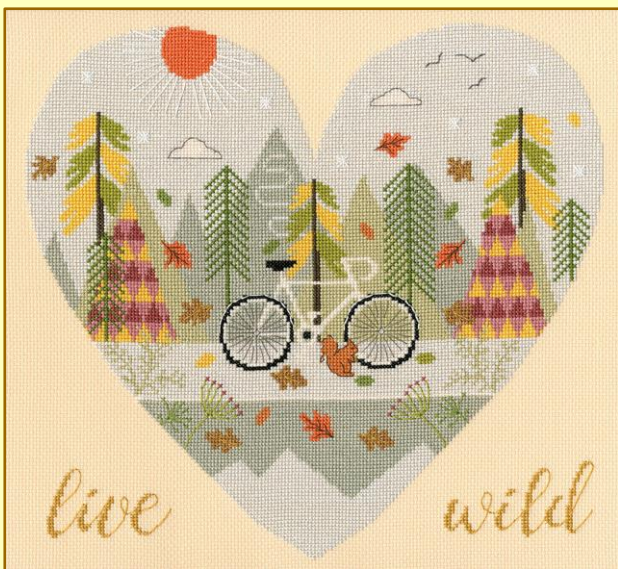


Vintage Camping
ref XBET1



Vintage Beach Huts
ref XBET2

Hilary's 'Wild At Heart' designs are on 14hpi ecru and misty blue coloured Aida.
The finished size is 32x30cm. Spring and summer themed designs
will follow to make a set of the four seasons.



Live Wild
ref XHY3



Roam Free
ref HY4



XXXXX Counted Cross Stitch XXXXX

Christmas Collection 2021

Sharon's striking 'Jewelled' animals are worked on 14hpi white Aida.
The finished size is 32x32cm and more animals will follow these first two designs.



Jewelled Eagle
ref XSTU1



Jewelled Leopard
ref XSTU2