



# Spring Collection 2018

14hpi Counted Cross Stitch

Introducing Lavinia Stamps' Fairies!



**Dandelion Fairy**

ref XE5P 26x26cm



**Dreams**

ref XE6P 26x26cm



**Luna**

ref XE7P 26x36cm



**Melody**

ref XE8P 26x36cm



Four new designs by Hannah Dale on Aida printed with speckles



**The Meadow**

ref XHD30  
26x26cm

**Doe A Deer**

ref XHD32  
26x26cm



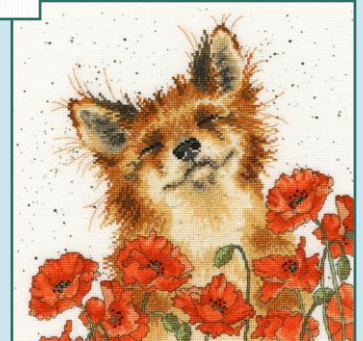
**Bluebell Wood**

ref XHD31  
26x26cm



**Poppy Field**

ref XHD33  
26x26cm



Introducing Sarah Reilly's 'Love Country' scenes

**Peace And Huggles** ref XSR1 30x24cm



**Bee Lovely** ref XSR2 30x24cm





# Spring Collection 2018

Four stunning new Gorjuss designs  
on 16hpi printed Aida!



**Spring At Last**  
ref XG38 22x31cm



**Summer Days**  
ref XG39 22x31cm



**Autumn Leaves**  
ref XG40 22x31cm



**Winter Time**  
ref XG41 22x31cm

www.santoro-london.com Gorjuss Collection. ©2006, 2018 Santoro. Santoro® & Gorjuss™ are trademarks of Santoro.

## Four new designs by Rose Swalwell



**Morning Rose**  
14hpi ref MKP7 13x27.5cm



**Evening Rose**  
14hpi ref MKP8 13x27.5cm



**Windmill**  
22ct canvas  
ref SLS17 11x11cm



**Meadow**  
22ct canvas  
ref SLS18 11x11cm

## Wedding Bells are in the air...

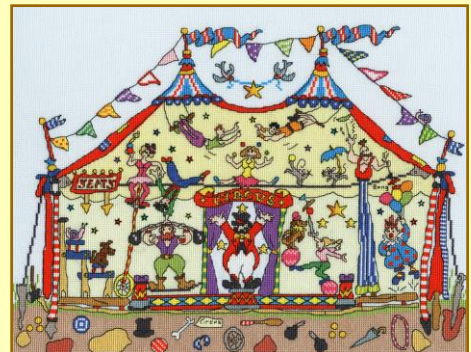
...and all the fun of the circus

### Love Vows

14hpi ref XKA16  
24x28cm  
by Kim Anderson



**The Big Day!**  
14hpi ref XWS11  
28x28cm  
by Laura Ann



**Cut Thru' Big Top**  
16hpi ref XCT34 34x26cm by Amanda Loveseed



# Summer Collection 2018

14hpi Counted Cross Stitch

## Introducing Fairies by Sue Waddicor ...

**Stardust**  
ref XF6  
20 x 36cm



**Flora**  
ref XF7  
20 x 36cm



**Crystal**  
ref XF8  
20 x 36cm



## ...and Mila Marquis



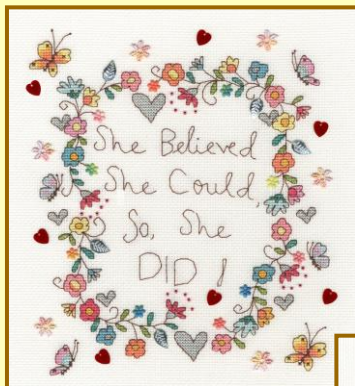
**Flower Rain**  
ref XMM1 26 x 26cm



**Butterfly Dance**  
ref XMM2 26 x 26cm



**Miss Heart**  
ref XMM3 26 x 26cm



**Love Note**  
ref XKA17 23 x 26cm



**Love You Deerly**  
ref XKA18 25 x 18cm



**Summer Meadow**  
ref XMM4 26 x 26cm

## Two new 'Love' designs by Kim Anderson...



# Summer Collection 2018

Wrendale  
DESIGNS

by Hannah Dale

Four new designs by Hannah Dale on 14hpi Aida printed with speckles



Little Clown  
ref XHD34  
26 x 26cm

Truffles And  
Trotters  
ref XHD35  
26 x 26cm



The Diet Starts  
Tomorrow  
ref XHD37  
26 x 26cm



Birds Of A  
Feather  
ref XHD36  
26 x 26cm

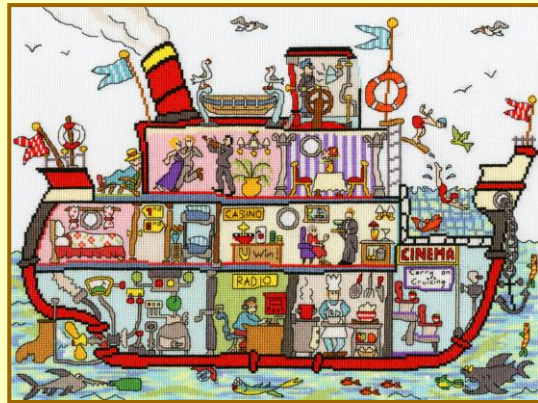


A new sampler by Bothy Designs,  
a new Cut Thru' by Amanda Loveseed both on 16hpi Aida,  
and more Seasonal Celebrations by Allison Hullyer on 14hpi Aida



Time And Tide  
ref XBD5 27 x 36cm

Cut Thru' Cruise Ship  
ref XCT35 35 x 26cm



Summer Celebration  
ref XAH3 26 x 26cm



Autumn Celebration  
ref XAH4 26 x 26cm





# Autumn Collection 2018

14hpi Counted Cross Stitch

Two magical new fairies by Lavinia Stamps



Casting Spells

ref XE9P 36 x 26cm



Rendezvous

ref XE10P 36 x 26cm

## Two new Beryl Cook designs



Dancing Class

ref XBC4 26 x 26cm



It Takes Two To Tango

ref XBC5 22 x 27cm

## Two new Rosina Wachtmeister designs



After The Storm

ref XRW5 28 x 19cm



Five Cats

ref XRW6 28 x 19cm



# Autumn Collection 2018

Wrendale  
DESIGNS

by Hannah Dale

Four new designs by Hannah Dale on 14hpi Aida printed with speckles



Hippy Hare  
ref XHD38  
26 x 26cm

Christmas  
Donkey  
ref XHD39  
26 x 26cm



Flight Of The  
Bumblebee  
ref XHD41  
26 x 26cm



No Cause For  
A-Llama  
ref XHD40  
26 x 26cm



A new sampler by Michelle Grace on 16hpi Aida, a new seaside scene on colour printed 14hpi Aida by Paul Liggins and a new 'Love Country' design by Sarah Reilly on 14hpi vintage brown Aida



Home Is Where The Heart Is  
ref XMGI 26 x 26cm

Summer Cove  
ref XPL1 26 x 26cm



Heart of the Woodland  
ref XSR3 26 x 28cm

Love  
Country  
by Sarah Reilly



# Autumn Collection 2018

Wrendale  
DESIGNS  
by Hannah Dale

Four new tapestry kits based on Hannah Dale's popular animal designs on 10hpi full colour printed canvas



Jolly Robin  
ref THD5  
36 x 36cm



The Nutcracker  
ref THD14  
36 x 36cm



Highland Heathers  
ref THD9  
36 x 36cm



Bath Time  
ref THD16  
36 x 36cm

## Christmas is coming...

New Christmas designs including three new Christmas Cards all on 14hpi Aida.



Decorating The Tree  
ref XX13 26 x 26cm

Xmas Moose  
ref XMAS7 10 x 10cm



Xmas Fox  
ref XMAS8 10 x 10cm



Slightly Dotty Snowmen  
ref XEJ5 26 x 26cm



Robin Wreath  
ref XX14 26 x 26cm

Xmas Bear  
ref XMAS9 10 x 10cm



Slightly Dotty Xmas Puds  
ref XEJ6 26 x 26cm



# Bebunni Collection 2018



Daisy  
ref XBB1  
16x22cm

Sewn With Love  
ref XBB2  
18x22cm



Butterflies  
ref XBB3  
18x20cm



Angel  
ref XBB4  
18x22cm



Christmas  
Pudding  
ref XBB5  
16x22cm

Rudolf  
ref XBB7  
16x22cm



Poinsettia  
ref XBB6  
16x22cm



Bebunni®